

medifab

Shaping Better Lives



**ENABLE
WHAIKAHA**



BAND 2 & 3 LIST EQUIPMENT

Contents

Band 2

JAY Ion Cushion	6
JAY Union Cushion	7
Spex Vigour Cushion	8
Spex Vigour Back Support	9
Spex Zygo Active Contour Mid Back Support	10
Spex Zygo Deep Contour Mid Back Support	11

Band 3

Spex Classic Standard Contour Cushion	14
Spex Classic High Contour Cushion	15
Spex Classic SuperHigh Contour Cushion	16
JAY Fusion Air Cushion	17
JAY Fusion Fluid Cushion	18
Spex Classic Back Support	19
Spex T-Shape Back Support	20
QUICKIE 2 Wheelchair	21
QUICKIE IRIS Wheelchair	22
ZIPPIE IRIS Wheelchair	23
QUICKIE Q400 M Wheelchair	24
ZIPPIE Z500 M Mini Wheelchair	25
QUICKIE Q500 M Mini Wheelchair (adult)	26
QUICKIE Q500 M Wheelchair	27
QUICKIE Q700 R Wheelchair	28
QUICKIE Q700 F Wheelchair	29




Stay Connected

Register today to be the first to know about upcoming education events, webinars, and academies.





A photograph of an office setting, partially obscured by a large white circular graphic on the left. The office features a wooden conference table with a laptop, a glass of water, and a telephone. A person in a blue shirt is partially visible on the right side of the frame.

Band 2 List Equipment



JAY Ion Cushion

The JAY Ion is a multi-layer foam cushion which provides comfort and minimal positioning to users who are uncomfortable in their chair and have a low pressure risk.

The Ion has multi-layer foam with a Soft Visco memory foam top layer. For convenience and protection, the JAY Ion features a dual-cover system. The water-resistant inner cover assists with incontinence and moisture management, is easy to clean and includes anti-wicking seam thread and Aquaguard zipper for foam protection.

The machine-washable, stretch outer cover utilizes naturally anti-microbial, silver-impregnated X-static® fibre which help to minimise bacteria build-up (and thus minimise odour). A layer of 3DX spacer fabric promotes airflow for additional skin protection. This cover also helps to reduce shear.



Assessor Accreditation: WMPML1, WMPML1P, WMPML2, WMPML2P

Max User Weight: 14"-21" wide: 136kg; 22"-24" wide: 225kg

Supplier Product ID	JDE#	Size (WxD)	Price Break	Ordering Code
1705-01-JION1414	875894	14x14"	\$250-\$500	CU292
1705-01-JION1416	852182	14x16"	\$250-\$500	CU293
1705-01-JION1418	884459	14x18"	\$250-\$500	CU294
1705-01-JION1614	866568	16x14"	\$250-\$500	CU295
1705-01-JION1616	861011	16x16"	\$250-\$500	CU296
1705-01-JION1618	842101	16x18"	\$250-\$500	CU297
1705-01-JION1620	844131	16x20"	\$250-\$500	CU298
1705-01-JION1816	911672	18x16"	\$250-\$500	CU299
1705-01-JION1818	837513	18x18"	\$250-\$500	CU300
1705-01-JION1820	874103	18x20"	\$250-\$500	CU301
1705-01-JION2018	846962	20x18"	\$250-\$500	CU302
1705-01-JION2020	842208	20x20"	\$250-\$500	CU303
1705-01-JION2022	872116	20x22"	\$250-\$500	CU304
1705-01-JION2218	898375	22x18"	\$500-\$750	CU305
1705-01-JION2220	894121	22x20"	\$750-\$1000	CU306
1705-01-JION2222	911699	22x22"	\$500-\$750	CU307
1705-01-JION2223	911701	22x23"	\$500-\$750	CU308
1705-01-JION2224	911710	22x24"	\$500-\$750	CU309
1705-01-JION2322	911728	23x22"	\$500-\$750	CU310
1705-01-JION2323	911736	23x23"	\$500-\$750	CU311
1705-01-JION2420	911779	24x20"	\$500-\$750	CU312
1705-01-JION2422	911744	24x22"	\$500-\$750	CU313
1705-01-JION2424	911761	24x24"	\$500-\$750	CU314

JAY Union Cushion

The JAY Union is a versatile low maintenance cushion which is comfortable, provides skin protection and moderate postural support.

A multi-layer base with pre-contoured high-resistance foam with a Soft Visco memory foam overlay. The base provides a gentle, but moderate level of postural support – encouraging a neutral and pelvic position.

A dynamic fluid bladder is located in between the layers of foam. This increases comfort but more importantly ensures this cushion is able to provide a moderate to high level of pressure care.

Moisture-resistant inner cover assists with incontinence and moisture management. The anti-microbial outer cover provides good air flow whilst the X-static silver threads help to minimise bacteria build-up. This cover also helps to reduce shear.



Assessor Accreditation: WMPML1, WMPML1P, WMPML2, WMPML2P

Max User Weight: 14"-21" wide: 136kg; 22"-24" wide: 225kg

Supplier Product ID	JDE#	Size (WxD)	Price Break	Ordering Code
1707-01-JU1414	911971	14x14"	\$500-\$750	CU329
1707-01-JU1416	875561	14x16"	\$500-\$750	CU330
1707-01-JU1418	867026	14x18"	\$500-\$750	CU331
1707-01-JU1614	911998	16x14"	\$500-\$750	CU332
1707-01-JU1616	867317	16x16"	\$500-\$750	CU333
1707-01-JU1618	854436	16x18"	\$500-\$750	CU334
1707-01-JU1620	889495	16x20"	\$500-\$750	CU335
1707-01-JU1816	912018	18x16"	\$500-\$750	CU336
1707-01-JU1818	868838	18x18"	\$500-\$750	CU337
1707-01-JU1820	849661	18x20"	\$500-\$750	CU338
1707-01-JU2018	869187	20x18"	\$500-\$750	CU339
1707-01-JU2020	869646	20x20"	\$500-\$750	CU340
1707-01-JU2022	892601	20x22"	\$500-\$750	CU341
1707-01-JU2218	867739	22x18"	\$750-\$1000	CU342
1707-01-JU2220	911411	22x20"	\$750-\$1000	CU343
1707-01-JU2222	912026	22x22"	\$750-\$1000	CU344
1707-01-JU2223	912034	22x23"	\$750-\$1000	CU345
1707-01-JU2224	912042	22x24"	\$750-\$1000	CU346
1707-01-JU2322	912051	23x22"	\$750-\$1000	CU347
1707-01-JU2323	912069	23x23"	\$750-\$1000	CU348
1707-01-JU2420	912077	24x20"	\$750-\$1000	CU349
1707-01-JU2422	912085	24x22"	\$750-\$1000	CU350
1707-01-JU2424	912093	24x24"	\$750-\$1000	CU351

Spex Vigour Cushion

The Vigour cushion is designed to properly centralise and stabilise the pelvis, hips, and legs to maintain and improve comfort, function, and positioning in all other parts of the body.

Vigour reduces fatigue and pressure with the support and comfort that helps you go the distance. A combination of high resilient foam and gel-foam that is durable, flexible and comfortable.

The Vigour Cushion is an excellent choice for individuals who:

- Require pressure reduction and redistribution
- Require pelvic stability
- Need moderate control of posture and upper extremities
- Need moderate control of abduction or adduction propensities



Assessor Accreditation: WMPML1, WMPML1P, WMPML2, WMPML2P

Max User Weight: 10"-15" wide: 90kg; 16"-20" wide: 160kg

Supplier Product ID	JDE#	Size (WxD)	Price Break	Ordering Code
1103-0808-OSC	911859	8x8"	\$500-\$750	CU315
1103-0810-OSC	911867	8x10"	\$500-\$750	CU316
1103-1010-OSC	889381	10x10"	\$500-\$750	CU317
1103-1012-OSC	840392	10x12"	\$500-\$750	CU318
1103-1212-OSC	752501	12x12"	\$500-\$750	CU245
1103-1214-OSC	752510	12x14"	\$500-\$750	CU246
1103-1414-OSC	752528	14x14"	\$500-\$750	CU247
1103-1416-OSC	752536	14x16"	\$500-\$750	CU248
1103-1418-OSC	909062	14x18"	\$500-\$750	CU319
1103-1616-OSC	752544	16x16"	\$500-\$750	CU249
1103-1618-OSC	752552	16x18"	\$500-\$750	CU250
1103-1620-OSC	874197	16x20"	\$500-\$750	CU320
1103-1816-OSC	902522	18x16"	\$500-\$750	CU321
1103-1818-OSC	752579	18x18"	\$500-\$750	CU251
1103-1820-OSC	848407	18x20"	\$500-\$750	CU252
1103-2020-OSC	752595	20x20"	\$500-\$750	CU253
1103-2022-OSC	853716	20x22"	\$500-\$750	CU322
1103-2218-OSC	911883	22x18"	\$750-\$1000	CU323
1103-2220-OSC	900148	22x20"	\$750-\$1000	CU324
1103-2222-OSC	911891	22x22"	\$750-\$1000	CU325
1103-2418-OSC	897241	24x18"	\$750-\$1000	CU326
1103-2420-OSC	911912	24x20"	\$750-\$1000	CU327
1103-2422-OSC	911939	24x22"	\$750-\$1000	CU328

Spex Vigour Back Support

Lightweight yet tough, to meet daily lifestyle demands of active wheelchair users. Back support angle and seat depth offers exceptional adjustability and can be facilitated with the user in the wheelchair. Ventilated spacer-fabric and shell system increases air flow through the back offering daily comfort.

Vigour Back Support is designed for individuals who require:

- A solid back support
- Minimal to moderate postural support
- Improved spinal and pelvic positioning whilst maintaining propelling efficiency
- Combine with lateral supports to offer exceptional trunk and thoracic stability



Standard Hardware: Quad Mount

Max User Weight: Up to 15" wide: 90kg; 16"+ wide: 160kg

Supplier Product ID	JDE#	Size (WxH)	Price Break	Ordering Code
1252-1012-00H	892361	10x12"	\$1000-\$1500	BR20
1252-1016-00H	862031	10x16"	\$1000-\$1500	BR22
1252-1214-00H	738259	12x14"	\$1000-\$1500	BR23
1252-1216-00H	869355	12x16"	\$1000-\$1500	BR24
1252-1218-00H	805263	12x18"	\$1000-\$1500	BR25
1252-1416-00H	871498	14x16"	\$1000-\$1500	BR26
1252-1418-00H	738267	14x18"	\$1000-\$1500	BR27
1252-1420-00H	805271	14x20"	\$1000-\$1500	BR28
1252-1618-00H	872378	16x18"	\$1000-\$1500	BR29
1252-1620-00H	738275	16x20"	\$1000-\$1500	BR30
1252-1623-00H	805280	16x23"	\$1000-\$1500	BR31
1252-1818-00H	880239	18x18"	\$1000-\$1500	BR32
1252-1820-00H	738291	18x20"	\$1000-\$1500	BR33
1252-1823-00H	805301	18x23"	\$1000-\$1500	BR34
1252-2018-00H	871703	20x18"	\$1000-\$1500	BR35
1252-2020-00H	867608	20x20"	\$1000-\$1500	BR36
1252-2023-00H	869339	20x23"	\$1000-\$1500	BR37
1258-2216-00H	924043	22x16"	\$1000-\$1500	BR165
1258-2220-00H	924051	22x20"	\$1000-\$1500	BR166
1258-2416-00H	924060	24x16"	\$1000-\$1500	BR167
1258-2420-00H	924078	24x20"	\$1000-\$1500	BR168
1258-2616-00H	924086	26x16"	\$1000-\$1500	BR169
1258-2620-00H	924094	26x20"	\$1000-\$1500	BR170

Spex Zygo Back Support

Active Contour Mid

Enabling freedom without compromising posture and comfort, Zygo is a back support with inbuilt laterals designed for full-time self-propelling wheelchair users.

Includes supportive foam unit, outer anti-shear breathable cover, contoured aluminium shell, positioning wedges, modesty flap.

A mid height shell with an open shallow contour provides:

- Support for the pelvis, lumbar spine and thoracic spine
- Shallow contour suitable for users with moderate trunk mobility and strength
- Different height options allow the shell to reach the mid-thoracic or upper-thoracic region



Standard Hardware: Drop Mount

Max User Weight: 136kg

Supplier Product ID	JDE#	Size (WxH)	Price Break	Ordering Code
1251-1009-OAM	923180	10x9"	\$1000-\$1500	BR68
1251-1207-OAL	923198	12x7"	\$750-\$1000	BR69
1251-1210-OAM	923219	12x10"	\$1000-\$1500	BR70
1251-1212-OAM	923227	12x12"	\$1000-\$1500	BR71
1251-1408-OAL	923235	14x8"	\$750-\$1000	BR72
1251-1413-OAM	923243	14x13"	\$1000-\$1500	BR73
1251-1415-OAM	923163	14x15"	\$1000-\$1500	BR74
1251-1609-OAL	923260	16x9"	\$750-\$1000	BR75
1251-1614-OAM	923278	16x14"	\$1000-\$1500	BR76
1251-1616-OAM	923286	16x16"	\$1000-\$1500	BR77
1251-1809-OAL	923294	18x9"	\$750-\$1000	BR78
1251-1815-OAM	923307	18x15"	\$1000-\$1500	BR79
1251-1817-OAM	923315	18x17"	\$1000-\$1500	BR80
1251-2011-OAL	923323	20x11"	\$750-\$1000	BR81
1251-2015-OAM	923331	20x15"	\$750-\$1000	BR82
1251-2018-OAM	923340	20x18"	\$1000-\$1500	BR83

Spex Zygo Back Support

Deep Contour Mid

Spex Seating aimed to design the Zygo back supports with suitable shapes and sizes for most active users, without any major adjustments or customisations.

Includes supportive foam unit, outer anti-shear breathable cover, contoured aluminium shell, positioning wedges, modesty flap.

A mid height shell with a supportive deep contour provides:

- Support for the pelvis, lumbar spine and thoracic spine
- Shallow contour suitable for users with moderate trunk mobility and strength
- Different height options allow the shell to reach the mid-thoracic or upper-thoracic region



Standard Hardware: Drop Mount

Max User Weight: 136kg

Supplier Product ID	JDE#	Size (WxH)	Price Break	Ordering Code
1251-1011-ODM	923374	10x11"	\$1000-\$1500	BR100
1251-1207-ODL	923382	12x7"	\$1000-\$1500	BR101
1251-1212-ODM	923391	12x12"	\$1000-\$1500	BR102
1251-1213-ODM	923403	12x13"	\$1000-\$1500	BR103
1251-1408-ODL	923411	14x8"	\$1000-\$1500	BR104
1251-1415-ODM	923420	14x15"	\$1000-\$1500	BR105
1251-1416-ODM	923438	14x16"	\$1000-\$1500	BR106
1251-1609-ODL	923446	16x9"	\$1000-\$1500	BR107
1251-1616-ODM	923454	16x16"	\$1000-\$1500	BR108
1251-1617-ODM	923462	16x17"	\$1000-\$1500	BR109
1251-1809-ODL	923471	18x9"	\$1000-\$1500	BR110
1251-1817-ODM	923489	18x17"	\$1000-\$1500	BR111
1251-1818-ODM	923497	18x18"	\$1000-\$1500	BR112
1251-2011-ODL	923500	20x11"	\$1000-\$1500	BR113



Band 3 List Equipment



Spex Classic Cushion

Standard Contour

Designed for the user who has moderate to severe positioning and pressure requirements.

This is an excellent choice for individuals who:

- Have changing postural needs over time
- Have a symmetrical or asymmetrical sitting posture that requires correction or control
- Require pelvic comfort and pressure relief/distribution
- Require a high degree of pelvic stability and specific contouring
- Have tight hamstrings/lack of hip flexion
- Need moderate control of abduction or adduction propensities



Assessor Accreditation: WMPML1, WMPML1P, WMPML2, WMPML2P

Max User Weight: 10"-15" wide: 90kg; 16"-20" wide: 160kg

Supplier Product ID	JDE#	Size (WxD)	Price Break	Ordering Code
1105-0808-OSC	912106	8x8"	\$500-\$750	CU352
1105-0810-OSC	912114	8x10"	\$500-\$750	CU353
1105-1010-OSC	912122	10x10"	\$500-\$750	CU354
1105-1012-OSC	883536	10x12"	\$500-\$750	CU355
1105-1212-OSC	746195	12x12"	\$500-\$750	CU255
1105-1214-OSC	746208	12x14"	\$500-\$750	CU256
1105-1414-OSC	746216	14x14"	\$500-\$750	CU257
1105-1416-OSC	746224	14x16"	\$500-\$750	CU258
1105-1418-OSC	855210	14x18"	\$500-\$750	CU356
1105-1616-OSC	746232	16x16"	\$500-\$750	CU259
1105-1618-OSC	746241	16x18"	\$500-\$750	CU260
1105-1620-OSC	912131	16x20"	\$500-\$750	CU357
1105-1816-OSC	912149	18x16"	\$750-\$1000	CU358
1105-1818-OSC	746267	18x18"	\$750-\$1000	CU262
1105-1820-OSC	746275	18x20"	\$750-\$1000	CU263
1105-2018-OSC	869566	20x18"	\$750-\$1000	CU359
1105-2020-OSC	912157	20x20"	\$750-\$1000	CU360
1105-2022-OSC	853724	20x22"	\$750-\$1000	CU361
1105-2218-OSC	912165	22x18"	\$1000-\$1500	CU362
1105-2220-OSC	864642	22x20"	\$750-\$1000	CU363
1105-2222-OSC	912173	22x22"	\$750-\$1000	CU364
1105-2418-OSC	893460	24x18"	\$750-\$1000	CU365
1105-2420-OSC	912181	24x20"	\$750-\$1000	CU366
1105-2422-OSC	912190	24x22"	\$750-\$1000	CU367
1105-2424-OSC	912202	24x24"	\$750-\$1000	CU368

Spex Classic Cushion

High Contour

The Spex High Contour Cushion offers enhanced thigh and abductor support. It is the key solution to positioning and levelling the pelvis correctly and effectively. Accomplish on-the-spot modifications with the cushion's strategic positioning base.

This is an excellent choice for individuals who:

- Need high control of abduction or adduction propensities
- Have changing postural needs
- Have a symmetrical or asymmetrical sitting posture that requires correction or control
- Require pelvic comfort and pressure relief/distribution
- Require a high degree of pelvic stability and specific contouring



Assessor Accreditation: WMPML1, WMPML1P, WMPML2, WMPML2P

Max User Weight: 10"- 15" wide: 90kg; 16"-20" wide: 160kg

Supplier Product ID	JDE#	Size (WxD)	Price Break	Ordering Code
1105-0808-OHC	912261	8x8"	\$750-\$1000	CU392
1105-0810-OHC	912296	8x10"	\$750-\$1000	CU393
1105-1010-OHC	849442	10x10"	\$500-\$750	CU394
1105-1012-OHC	845185	10x12"	\$500-\$750	CU395
1105-1212-OHC	840211	12x12"	\$500-\$750	CU396
1105-1214-OHC	849055	12x14"	\$500-\$750	CU397
1105-1414-OHC	841969	14x14"	\$500-\$750	CU398
1105-1416-OHC	841459	14x16"	\$500-\$750	CU399
1105-1616-OHC	841467	16x16"	\$500-\$750	CU400
1105-1618-OHC	842312	16x18"	\$500-\$750	CU401
1105-1620-OHC	847236	16x20"	\$750-\$1000	CU402
1105-1816-OHC	857186	18x16"	\$500-\$750	CU403
1105-1818-OHC	841707	18x18"	\$750-\$1000	CU404
1105-1820-OHC	840077	18x20"	\$750-\$1000	CU405
1105-2018-OHC	860916	20x18"	\$750-\$1000	CU406
1105-2020-OHC	853871	20x20"	\$750-\$1000	CU407
1105-2022-OHC	866701	20x22"	\$750-\$1000	CU408
1105-2218-OHC	912309	22x18"	\$1000-\$1500	CU409
1105-2220-OHC	912333	22x20"	\$750-\$1000	CU410
1105-2222-OHC	889225	22x22"	\$750-\$1000	CU411
1105-2418-OHC	912341	24x18"	\$750-\$1000	CU412
1105-2420-OHC	912350	24x20"	\$750-\$1000	CU413
1105-2422-OHC	912368	24x22"	\$750-\$1000	CU414
1105-2424-OHC	912405	24x24"	\$750-\$1000	CU415

Spex Classic Cushion

SuperHigh Contour

The SuperHigh contour cushion creates an optimum pelvic foundation for the user who requires extra pelvic and hip immersion.

This is an excellent choice for individuals who:

- Have muscle tone patterns that require sufficient thigh lateral control. Thigh support is higher for alignment
- If extremity support can't be maintained through the use of external thigh laterals
- Have a symmetrical or asymmetrical sitting posture
- Require pelvic comfort and pressure relief/distribution
- Require a high degree of pelvic stability and specific contouring



10 - 13" Trough Height = 80mm
14"+ Trough Height = 100mm

Assessor Accreditation: WMPML1, WMPML1P, WMPML2, WMPML2P

Max User Weight: 10"-15" wide: 90kg; 16"-20" wide: 160kg

Supplier Product ID	JDE#	Size (WxD)	Price Break	Ordering Code
1105-0808-OSS	912421	8x8	\$750-\$1000	CU439
1105-0810-OSS	912456	8x10	\$750-\$1000	CU440
1105-1010-OSS	912481	10x10	\$750-\$1000	CU441
1105-1012-OSS	912587	10x12	\$750-\$1000	CU442
1105-1212-OSS	898041	12x12	\$750-\$1000	CU443
1105-1214-OSS	912616	12x14	\$750-\$1000	CU444
1105-1414-OSS	912624	14x14	\$750-\$1000	CU445
1105-1416-OSS	868977	14x16	\$750-\$1000	CU446
1105-1418-OSS	912641	14x18	\$1000-\$1500	CU447
1105-1616-OSS	912659	16x16	\$750-\$1000	CU448
1105-1618-OSS	896290	16x18	\$750-\$1000	CU449
1105-1620-OSS	912675	16x20	\$750-\$1000	CU450
1105-1816-OSS	912691	18x16	\$1000-\$1500	CU451
1105-1818-OSS	912721	18x18	\$750-\$1000	CU452
1105-1820-OSS	897760	18x20	\$750-\$1000	CU453
1105-2018-OSS	912704	20x18	\$1000-\$1500	CU454
1105-2022-OSS	912712	20x22	\$750-\$1000	CU456

JAY Fusion Air Cushion

The JAY Fusion is an adjustable multi-layer wheelchair cushion that features JAY Air insert options on the surface of the base to provide a high level of pressure protection whilst providing support, stability and comfort.

Fusion features a multi-layer pre-contoured closed cell foam base with a soft foam overlay. Soft upper base foam and well fits user comfortably and effectively throughout entire cushion surface. Air Insert is located on top of the foam base. This allows for good pelvic immersion into the cushion – minimising the risk of skin breakdown.

Moisture-resistant inner cover assists with incontinence and moisture management. The anti-microbial outer cover provides good air flow whilst the X-static silver threads help to minimise bacteria build-up. This cover also helps to reduce shear.



Assessor Accreditation: WMPML1, WMPML1P, WMPML2, WMPML2P

Max User Weight: 14"-21" wide: 136kg; 22"-24" wide: 225kg

Supplier Product ID	JDE#	Size (WxD)	Price Break	Ordering Code
1713-07-JFUSION1414AD	912325	14x14"	\$750-\$1000	CU509
1713-07-FUSION1416AD	912317	14x16"	\$750-\$1000	CU510
1713-07-JFUSION1416AD	877275	14x18"	\$750-\$1000	CU511
1713-07-JFUSION1418AD	912288	16x14"	\$750-\$1000	CU512
1713-07-JFUSION1616AD	912270	16x16"	\$750-\$1000	CU513
1713-07-JFUSION1618AD	866980	16x18"	\$750-\$1000	CU514
1713-07-JFUSION1620AD	912253	16x20"	\$750-\$1000	CU515
1713-07-JFUSION1816AD	912245	18x16"	\$750-\$1000	CU516
1713-07-JFUSION1818AD	861388	18x18"	\$750-\$1000	CU517
1713-07-JFUSION1820AD	912237	18x20"	\$750-\$1000	CU518
1713-07-JFUSION2018AD	912229	20x18"	\$750-\$1000	CU519
1713-07-JFUSION2020AD	865611	20x20"	\$750-\$1000	CU520
1713-07-JFUSION2022AD	912211	20x22"	\$750-\$1000	CU521
1713-07-JFUSION2218AD	912000	22x18"	\$1000-\$1500	CU522
1713-07-JFUSION2222AD	911980	22x22"	\$750-\$1000	CU523
1713-07-JFUSION2223AD	911963	22x23"	\$750-\$1000	CU524
1713-07-JFUSION2224AD	911955	22x24"	\$750-\$1000	CU525
1713-07-JFUSION2420AD	911947	24x20"	\$750-\$1000	CU526
1713-07-JFUSION2421AD	911921	24x21"	\$750-\$1000	CU527
1713-07-JFUSION2422AD	911904	24x22"	\$750-\$1000	CU528
1713-07-JFUSION2424AD	911875	24x24"	\$750-\$1000	CU529

JAY Fusion Fluid Cushion

The JAY Fusion is an adjustable multi-layer wheelchair cushion that features JAY Flow Fluid insert options on the surface of the base to provide a high level of pressure protection whilst providing support, stability and comfort.

Fusion features a multi-layer pre-contoured closed cell foam base with a soft foam overlay. Soft upper base foam and well fits user comfortably and effectively throughout entire cushion surface. Fluid JAY Flow bladder is located on top of the foam base. This allows for good pelvic immersion into the cushion – minimising the risk of skin breakdown.

Moisture-resistant inner cover assists with incontinence and moisture management. The anti-microbial outer cover provides good air flow whilst the X-static silver threads help to minimise bacteria build-up. This cover also helps to reduce shear.



Assessor Accreditation: WMPML1, WMPML1P, WMPML2, WMPML2P

Max User Weight: 14"-21" wide: 136kg; 22"-24" wide: 225kg

Supplier Product ID	JDE#	Size (WxD)	Price Break	Ordering Code
1713-01-JFUSION1414	912501	14x14	\$750-\$1000	CU488
1713-01-JFUSION1416	887617	14x16	\$750-\$1000	CU489
1713-01-JFUSION1418	888409	14x18	\$750-\$1000	CU490
1713-01-JFUSION1614	912499	16x14	\$750-\$1000	CU491
1713-01-JFUSION1616	848191	16x16	\$750-\$1000	CU492
1713-01-JFUSION1618	843673	16x18	\$750-\$1000	CU493
1713-01-JFUSION1620	899722	16x20	\$750-\$1000	CU494
1713-01-JFUSION1816	912472	18x16	\$750-\$1000	CU495
1713-01-JFUSION1818	908166	18x18	\$750-\$1000	CU496
1713-01-JFUSION1820	892977	18x20	\$750-\$1000	CU497
1713-01-JFUSION2018	875704	20x18	\$750-\$1000	CU498
1713-01-JFUSION2020	897786	20x20	\$750-\$1000	CU499
1713-01-JFUSION2022	862604	20x22	\$750-\$1000	CU500
1713-01-JFUSION2218	912464	22x18	\$1000-\$1500	CU501
1713-01-JFUSION2222	912448	22x22	\$750-\$1000	CU502
1713-01-JFUSION2223	911402	22x23	\$750-\$1000	CU503
1713-01-JFUSION2224	912430	22x24	\$750-\$1000	CU504
1713-01-JFUSION2420	912413	24x20	\$750-\$1000	CU505
1713-01-JFUSION2421	912392	24x21	\$750-\$1000	CU506
1713-01-JFUSION2422	912384	24x22	\$750-\$1000	CU507
1713-01-JFUSION2424	912376	24x24	\$750-\$1000	CU508

Spex Classic Back Support

Easily solve upper torso needs for most wheelchair users with the Spex Classic. The Spex Classic back support incorporates the popular Spex Contouring Cube System to allow on-the-spot customisations for torso comfort and asymmetry needs.

- Effortless customisations
- On-the-spot adaptations for changing postural needs
- Instant results
- Cubes can be removed and added at any time
- Contouring doesn't move or slip out of adjustment
- Additional contouring support wedges can be used to further enhance the degree of contouring



Standard Hardware: Quad Mount

Max User Weight: Up to 15" wide: 90kg; 16-20" wide: 136kg

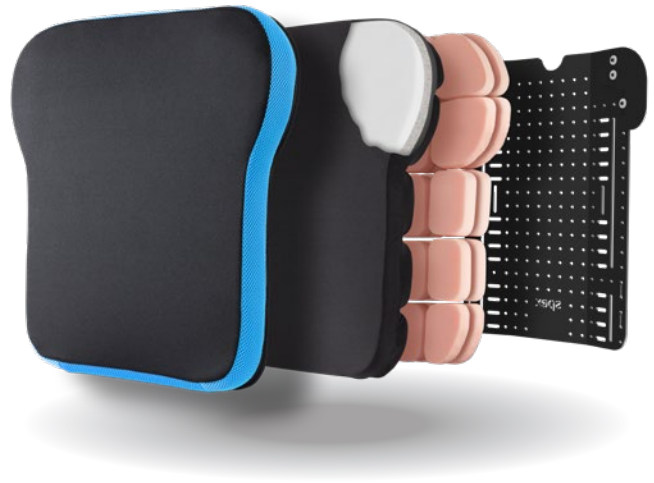
Supplier Product ID	JDE#	Size (WxH)	Price Break	Ordering Code
1255-1012-OSS	899714	10x12"	\$1500-\$2000	BR117
1255-1014-OSS	852676	10x14"	\$1500-\$2000	BR118
1255-1016-OSS	887730	10x16"	\$1500-\$2000	BR119
1255-1214-OSS	852561	12x14"	\$1500-\$2000	BR120
1255-1216-OSS	853071	12x16"	\$1500-\$2000	BR121
1255-1218-OSS	854823	12x18"	\$1500-\$2000	BR122
1255-1416-OSS	845142	14x16"	\$1500-\$2000	BR123
1255-1418-OSS	851155	14x18"	\$1500-\$2000	BR124
1255-1420-OSS	851260	14x20"	\$1500-\$2000	BR125
1255-1618-OSS	842620	16x18"	\$1500-\$2000	BR126
1255-1620-OSS	849215	16x20"	\$1500-\$2000	BR127
1255-1623-OSS	850128	16x23"	\$1500-\$2000	BR128
1255-1818-OSS	851657	18x18"	\$1500-\$2000	BR129
1255-1820-OSS	849531	18x20"	\$1500-\$2000	BR130
1255-1823-OSS	852895	18x23"	\$1500-\$2000	BR131
1255-2018-OSS	852781	20x18"	\$1500-\$2000	BR132
1255-2020-OSS	844879	20x20"	\$1500-\$2000	BR133
1255-2023-OSS	853388	20x23"	\$1500-&2000	BR134
1258-2220-OSS	924107	22x20"	\$1500-\$2000	BR171
1258-2420-OSS	924115	24x20"	\$1500-\$2000	BR172
1258-2620-OSS	924123	26x20"	\$1500-\$2000	BR173

Spex T-Shape Back Support

The T-Shape Back Support incorporates the classic Spex contouring cube system to allow on-the-spot customisations for torso comfort and asymmetry needs, whilst also providing greater stability for the user's upper body.

Greater stability in the trunk can allow for improved head and neck movements, and greater contact surface can aid with pressure distribution for comfort. The contouring and immersion ensures that individual body shape and comfort needs are easily responded to with the T-Shape Back Support.

The T-Shape provides superior upper back and shoulder support, and is especially useful in situations where the user requires tilt-in-space, as their upper body and shoulders will have more contact with the contact surface of the back support.



Standard Hardware: Quad Mount

Max User Weight: Up to 15" wide: 90kg; 16-20" wide: 136kg

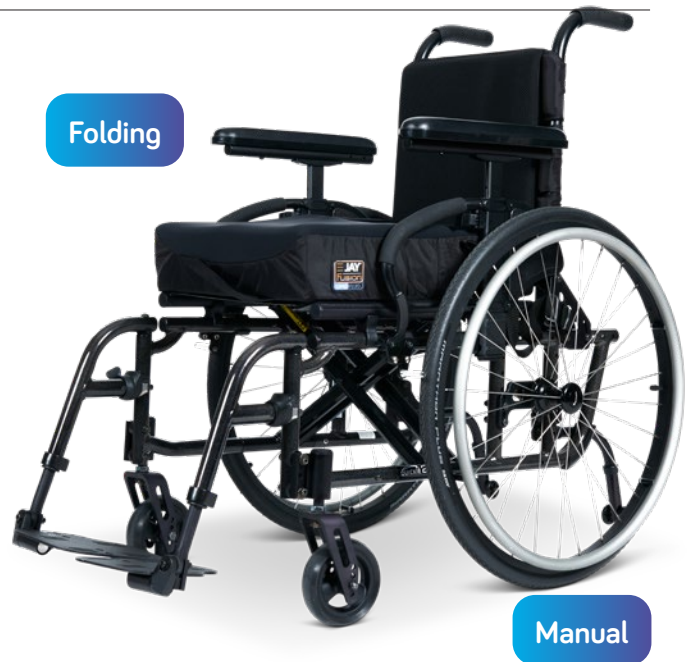
Supplier Product ID	JDE#	Size (WxH)	Price Break	Ordering Code
1255-1012-OTS	845193	10x12"	\$1000-\$1500	BR135
1255-1014-OTS	872571	10x14"	\$1000-\$1500	BR136
1255-1016-OTS	849434	10x16"	\$1000-\$1500	BR137
1255-1214-OTS	737791	12x14"	\$1000-\$1500	BR138
1255-1216-OTS	737803	12x16"	\$1000-\$1500	BR139
1255-1218-OTS	737811	12x18"	\$1000-\$1500	BR140
1255-1416-OTS	737820	14x16"	\$1000-\$1500	BR141
1255-1418-OTS	737838	14x18"	\$1000-\$1500	BR142
1255-1420-OTS	737846	14x20"	\$1000-\$1500	BR143
1255-1618-OTS	737854	16x18"	\$1000-\$1500	BR144
1255-1620-OTS	737862	16x20"	\$1000-\$1500	BR145
1255-1623-OTS	737871	16x23"	\$1000-\$1500	BR146
1255-1818-OTS	737918	18x18"	\$1000-\$1500	BR147
1255-1820-OTS	737926	18x20"	\$1000-\$1500	BR148
1255-1823-OTS	737934	18x23"	\$1000-\$1500	BR149
1255-2018-OTS	737942	20x18"	\$1000-\$1500	BR150
1255-2020-OTS	737951	20x20"	\$1000-\$1500	BR151
1255-2023-OTS	737969	20x23"	\$1000-\$1500	BR152

QUICKIE 2 Wheelchair

The modern QUICKIE 2 manual wheelchair series brings advanced aesthetics and technology to the lightweight folding QUICKIE range.

The QUICKIE 2 remains to be as versatile and modular as before but is now manufactured out of 7000 Series Aerospace Aluminium which makes the redesigned crossbrace more rigid, stronger, and lighter.

The stronger folding wheelchair frame results in an increased weight capacity of 136kg, while the overall chair weight is reduced by up to 1 kg. The incredibly versatile axle plate along with the modern wheels, caster housings, and upholstery provide a great-looking, easy-handling, and even more lightweight folding wheelchair.



Requests for this item MUST include:

* Enable New Zealand's Manual Wheelchair Specification Form & Quote



Assessor Accreditation: WMPML2, WMPML2P

Max User Weight: 136kg (standard) and 158kg (heavy duty)

QUICKIE 2 base unit includes:

- DAB depth & angle-adjustable back support
- 24" lite spoke rear wheels
- Anodised push rims
- Marathon plus tyres
- 5" x 1.5" semi-pneumatic castors
- Single post height-adjustable armrests with full length pads

Accessories JDE number: 891528

- 80° swing-away footrest hangers
- Aluminium angle-adjustable footplates
- 16" high 3DX tension adjustable
- Back upholstery
- Integrated push handles
- Anti-tips
- Black Opal frame colour

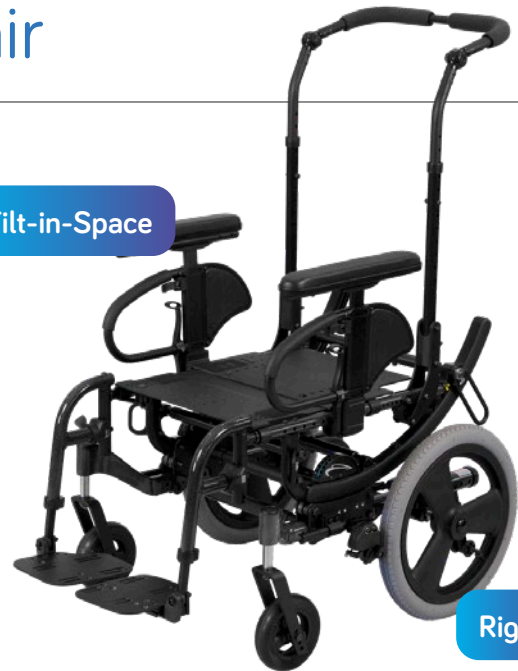
Description	JDE#	Seat (WxD)	Price Break	Ordering Code
QUICKIE 2 base unit	891481	12-19x12-19	\$3500-\$4000	WC278
QUICKIE 2 base unit	891499	12-19x20 & 20x12-19	\$5000-\$5500	WC279
QUICKIE 2 base unit	891501	20x20	\$5500-\$6000	WC280
QUICKIE 2 base unit	891510	Fully Scripted	N/A	WC281

QUICKIE IRIS Wheelchair

The QUICKIE IRIS Manual Tilt Wheelchair, ultimate tilt-in-space wheelchair, features up to 55° of Intelligent Rotation in Space Technology.

It also brings the broadest range of positioning and caregiver options, numerous adjustments, and is one of the lightest tilt-in-space wheelchairs available.

Tilt-in-Space



Rigid

Assessor Accreditation: WMPML1, WMPML1P, WMPML2, WMPML2P

Max User Weight: 136kg (standard) and 181kg (heavy duty)

Requests for this item **MUST** include:

* Enable New Zealand's Manual Wheelchair Specification Form & Quote



QUICKIE IRIS medium base unit includes:

Accessories JDE number: 889006

- True Fit growth system
- Tie-downs
- Width adjusting system
- Medium seat frame
- 6" x 1.5" semi-pneumatic front castors
- 16" rear mag wheels; pneumatic
- 80° legrest hangers with angle-adjustable footplates
- Dual post flip-back height-adjustable arm supports with full length pads
- Height-adjustable push handle
- Growable seat pan
- Anti-tips
- Black Opal frame colour
- Foot operated tilt and brakes

QUICKIE IRIS long base unit includes:

Accessories JDE number: 889006

- True Fit growth system
- Tie-downs
- Width adjusting system
- Long seat frame
- 6" x 1.5" semi-pneumatic front castors
- 16" rear mag wheels; pneumatic
- 80° legrest hangers with angle-adjustable footplates
- Dual post flip-back height-adjustable arm supports with full length pads
- Height-adjustable push handle
- Growable seat pan
- Anti-tips
- Black Opal frame colour
- Foot operated tilt and brakes

Description	JDE#	Seat (WxD)	Price Break	Ordering Code
QUICKIE IRIS medium base unit	889014	14-20x16-20	\$5000-\$5500	WC283
QUICKIE IRIS long base unit	889022	14-20x18-22	\$5500-\$6000	WC284

ZIPPIE IRIS Wheelchair

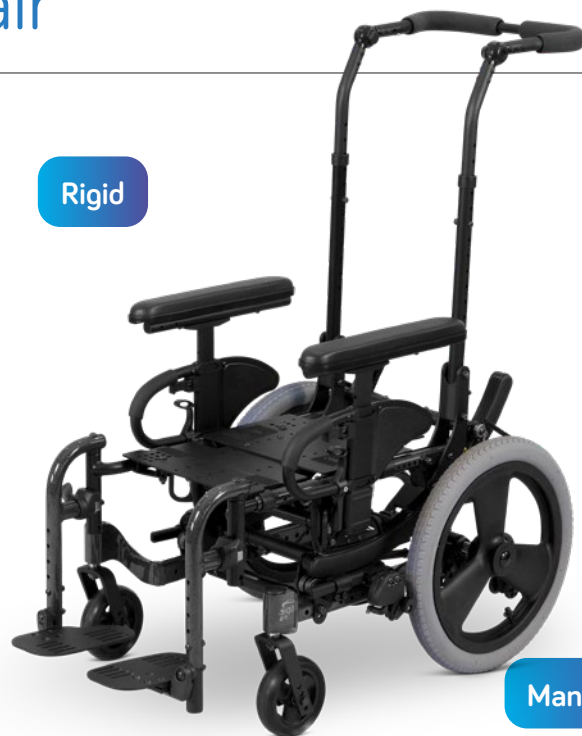
The ZIPPIE IRIS uses tilt-in-space technology to rotate the seat frame around the user's centre of gravity.

Available with 40° or 55° rotation ranges that can be set to achieve up to 45° or 60° of posterior rotation, the IRIS offers superior positioning capabilities.

This rotational system provides the shortest possible wheel base without compromising stability. It also ensures a smooth and controlled rotation. The ZIPPIE IRIS also comes with the True Fit Program, a complete growth package for free.

Eliminate the need for exposed cables with the Foot Release Tilt Actuator. Never again worry about cable systems getting in the way.

Ability to grow the chair frame as the child's needs change. You can adjust the centre-of-gravity/centre-of-rotation and depth as needed and increase the width with just a few parts.



Rigid

Manual

Requests for this item MUST include:

* Enable New Zealand's Manual Wheelchair Specification Form & Quote



Assessor Accreditation: WMPML1, WMPML1P, WMPML2, WMPML2P

Max User Weight: 102kg

ZIPPIE IRIS base unit includes:

- True Fit growth system
- Tie-downs
- Width adjusting system
- Short, medium and long seat frame
- 5" x 1.5" semi-pneumatic front castors
- 16" rear mag wheels; pneumatic
- 90° legrest hangers with angle-adjustable footplates
- Offset hanger mounts

Accessories JDE number: 888994

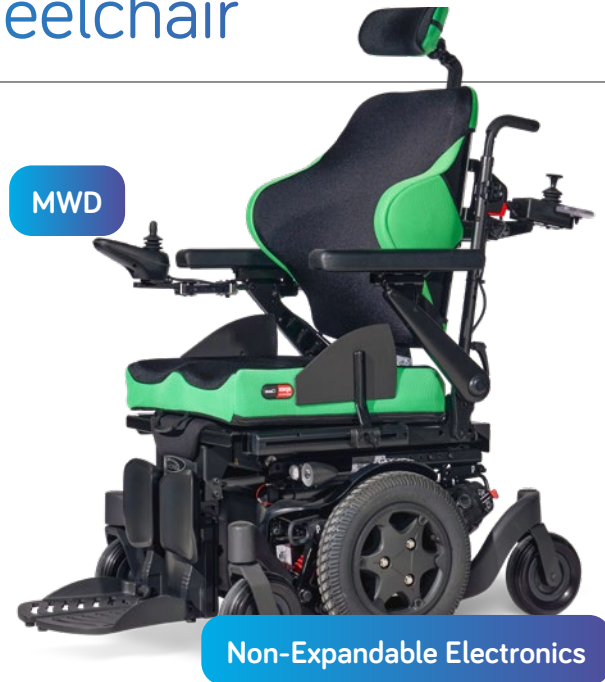
- Single post height-adjustable arm supports with full length pads
- Height-adjustable push handle
- Growable seat pan
- Anti-tips
- Black Opal frame colour
- Foot operated tilt
- Foot operated brakes

Description	JDE#	Seat (WxD)	Price Break	Ordering Code
ZIPPIE IRIS base unit	888986	10-14x10-18	\$4000-\$4500	WC285

QUICKIE Q400 M Wheelchair

Effortlessly balances great outdoor manoeuvrability with excellent indoor performance.

Combined with the benefits of the multi adjustable SEDEO® LITE seating and the most advanced controls, this creates the perfect powered wheelchair for a safe driving experience.



Max User Weight: 136kg

Requests for this item MUST include:

* Enable New Zealand's Power Wheelchair Specification Form & Quote



QUICKIE Q400 M base unit includes:

- VR2 non-expandable
- Electronics
- Lights
- 13" drive wheels
- 7" castors
- Transit tie-downs
- 4 pole motors
- 60Ah gel batteries
- Battery charger
- Standard lap belt

Options & accessories:

- Power seat tilt
- Power seat elevate
- Fixed centre mount leg rests
- 70° swing-away leg rests
- Manual elevating swing-away leg rests
- Stump supports
- Cantilever flip-back armrests
- Single post flip-back armrests
- Single post removable armrests
- Dual locking cantilever flip-back armrests
- Gel armrest pads
- Gel arm troughs
- Attendant controller
- Swing-away joystick mount
- Joystick knob options
- Tray table
- Transfer bars
- Cup holder
- Phone holder

Description	Category	Seat (WxD)	Price Break	Ordering Code
QUICKIE Q400 M	MWD Non-Expandable Electronics	15-20" x 16-22"	\$11,090+	1641-1000-001

ZIPPIE Z500 M Mini Wheelchair

Allows your child to navigate tight spaces and is capable of tackling tough terrain.

The Z500M Mini combines our ultra compact wheelchair with highly adjustable and customisable seating. A great choice to promote active kids.

MWD




Expandable Electronics

Max User Weight: 75kg

Requests for this item MUST include:

- * Enable New Zealand's Power Wheelchair Specification Form & Quote



- ZIPPIE Z500 M Mini base unit includes:**
- R-net expandable electronics
 - Lights
 - 13" drive wheels
 - 7" castors
 - Transit tie-downs
 - 4 pole motors
 - 50Ah gel batteries
 - Battery charger
 - Standard lap belt

- Options & accessories:**
- Power seat tilt
 - Power seat elevate
 - Fixed centre mount leg rests
 - 90, 80 & 70° swing-away leg rests
 - Manual elevating swing-away leg rests
 - Stump supports
 - Cantilever flip-back armrests
 - Single post armrests
 - Dual post armrests
 - Gel armrest pads
 - Gel arm troughs
 - Advanced colour joystick
 - Attendant controller
 - Swing-away joystick mount
 - Joystick knob options
 - Tray table
 - Transfer bars
 - Cup holder
 - Phone holder
 - Specialist control options

Description	Category	Seat (WxD)	Price Break	Ordering Code
ZIPPIE Z500 M Mini	Compact/Paediatric Expandable Electronics	10-16" x 10-19"	\$13,090+	1660-1000-001

QUICKIE Q500 M Mini Wheelchair (adult)

A compact mid wheel drive powerchair for ultimate ease of navigation!

Make your own adventure with the Q500M Mini, packed with clever advantages from the Q500 range of a practical drive base coupled with a new suspension system for maximum traction and comfort outdoors; but an even more compact chassis and tight turning circle for easy navigation indoors.

MWD



Powerchair

Max User Weight: 136kg

Requests for this item MUST include:

* Enable New Zealand's Power Wheelchair Specification Form & Quote



QUICKIE Q500 M Mini base unit includes:

- R-net expandable electronics
- Lights
- 13" drive wheels
- 7" castors
- Transit tie-downs
- 4 pole motors
- Q500m mini - 50Ah gel batteries
- Q500m - 60Ah gel batteries
- Battery charger
- Standard lap belt

Options & accessories:

- Power seat tilt
- Power seat elevate
- Power recline 130°
- Power centre mount elevating leg rests
- Power swing-away elevating leg rests
- Fixed centre mount leg rests
- 70° swing-away leg rests
- Stump supports
- Manual elevating swing-away leg rests
- Cantilever flip-back armrests
- Single post flip-back armrests
- Single post removable armrests
- Dual locking cantilever flip-back armrests
- Gel armrest pads
- Gel arm troughs
- Advanced colour joystick
- Attendant controller
- Swing-away joystick mount
- Joystick knob options
- Tray table
- Transfer bars
- Cup holder
- Phone holder
- Specialist control options

Description	Category	Seat (WxD)	Price Break	Ordering Code
QUICKIE Q500 M Mini	Compact/Paediatric Expandable Electronics	16-20" x 16-22"	\$14,190+	1651-1000-001

QUICKIE Q500 M Wheelchair

Superb indoor manoeuvrability, outstanding outdoor performance, head-turning style.

The QUICKIE Q500 M base balances superb indoor manoeuvrability with outstanding outdoor performance and head-turning style. All of these combined with the benefits of the highly personalised Sedeo Pro seating and the most advanced controls, creates the perfect powered wheelchair for any adventure. The updated suspension system delivers a more responsive, firm and comfortable ride.



Max User Weight: 136kg

Requests for this item MUST include:

* Enable New Zealand's Power Wheelchair Specification Form & Quote



QUICKIE Q500 M base unit includes:

- R-net expandable electronics
- Lights
- 13" drive wheels
- 7" castors
- Transit tie-downs
- 4 pole motors
- Q500M Mini - 50Ah gel batteries
- Q500M - 60Ah gel batteries
- Battery charger
- Standard lap belt

Options & accessories:

- Power seat tilt
- Power seat elevate
- Power recline, 130°
- Power recline, 150°
- Power centre mount elevating leg rests
- Power swing-away elevating leg rests
- Fixed centre mount leg rests
- 70° swing-away leg rests
- Manual elevating swing-away leg rests
- Stump supports
- Cantilever flip-back armrests
- Single post flip-back armrests
- Single post removable armrests
- Dual locking cantilever flip-back armrests
- Gel armrest pads
- Gel arm troughs
- Advanced colour joystick
- Attendant controller
- Swing-away joystick mount
- Joystick knob options
- Tray table
- Transfer bars
- Cup holder
- Phone holder
- Specialist control options

Description	Category	Seat (WxD)	Price Break	Ordering Code
QUICKIE Q500 M	MWD Expandable Electronics	15-20" x 16-22"	\$12,190+	1652-1000-001

QUICKIE Q700 R Wheelchair

Enjoy the ultimate driving experience with the Q700 R, QUICKIE's most advanced rear-wheel drive powered wheelchair!

Featuring Spirit Level technology, the advanced Sedeo Ergo biomechanical seating system and innovative controls or the supremely comfortable – and suitable for all – Sedeo Pro seating system and innovative controls.



Max User Weight: 160kg

Requests for this item MUST include:

* Enable New Zealand's Power Wheelchair Specification Form & Quote



QUICKIE Q700 R base unit includes:

- R-net expandable electronics
- Lights
- 14" drive wheels
- 6" castors
- Transit tie-downs
- 4 pole motors
- 70Ah gel batteries
- Battery charger

Options & accessories:

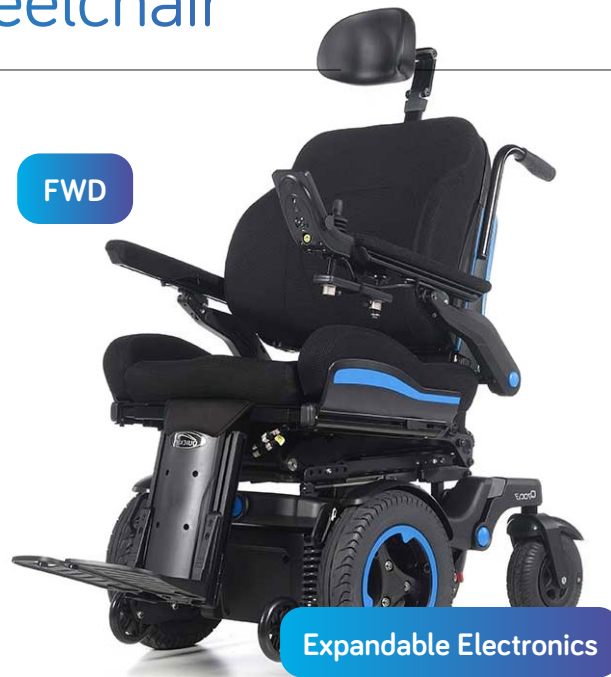
- Power seat tilt
- Power seat elevate
- Power recline, 130°
- Power recline, 150°
- Power centre mount elevating leg rests
- Power swing-away elevating leg rests
- Fixed centre mount leg rests
- 70° swing-away leg rests
- Manual elevating swing-away leg rests
- Stump supports
- Cantilever flip-back armrests
- Single post flip-back armrests
- Single post removable armrests
- Dual locking cantilever flip-back armrests
- Gel armrest pads
- Gel arm troughs
- Advanced colour joystick
- Attendant controller
- Swing-away joystick mount
- Joystick knob options
- Tray table
- Transfer bars
- Cup holder
- Phone holder
- Specialist control options

Description	Category	Seat (WxD)	Price Break	Ordering Code
QUICKIE Q700 R	RWD Expandable Electronics	15-20" x 16-22"	\$13,995+	1677-1000-001

QUICKIE Q700 F Wheelchair

Enjoy the ultimate driving experience with the Q700 F, QUICKIE's most advanced front-wheel drive powered wheelchair!

Featuring Spirit Level technology, the advanced Sedeo Ergo biomechanical seating system and innovative controls or the supremely comfortable - and suitable for all - Sedeo Pro seating system and innovative controls.



Max User Weight: 160kg

Requests for this item MUST include:

* Enable New Zealand's Power Wheelchair Specification Form & Quote



QUICKIE Q700 F base unit includes:

- R-net expandable electronics
- Lights
- 14" drive wheels
- 6" castors
- Transit tie-downs
- 4 pole motors
- 70Ah gel batteries
- Battery charger

Options & accessories:

- Power seat tilt
- Power seat elevate
- Power recline, 130°
- Power recline, 150°
- Power centre mount elevating leg rests
- Power swing-away elevating leg rests
- Fixed centre mount leg rests
- 70° swing-away leg rests
- Manual elevating swing-away leg rests
- Stump supports
- Cantilever flip-back armrests
- Single post flip-back armrests
- Single post removable armrests
- Dual locking cantilever flip-back armrests
- Gel armrest pads
- Gel arm troughs
- Advanced colour joystick
- Attendant controller
- Swing-away joystick mount
- Joystick knob options
- Tray table
- Transfer bars
- Cup holder
- Phone holder
- Specialist control options

Description	Category	Seat (WxD)	Price Break	Ordering Code
QUICKIE Q700 F	FWD Expandable Electronics	15-20" x 16-22"	\$13,995+	1678-1000-001



medifab

Distributed by Medifab Ltd

solutions@medifab.com

medifab.com

