

Jenx Multiseat

Order in only.
Not stocked in
Australia.



MODULAR SEATING SYSTEM

Distributed by
medifab

AUSTRALIAN
SCRIPTING AND ORDERING GUIDE

Client Details

Client/User Name:	
Date:	
NDIS/Funding:	
Notes	

**Order in only.
Not stocked in
Australia.**

Specifications

Measurements	Size 4	Size 5
Approx Age Range	8-14 years	10-18+ years
Max User Weight	100kg	
Seat Width	20-44cm	
Seat Depth	28.5-45cm	35.5-52cm
Footplate Height	25-47cm	
Seat Height from Floor	33.5-57cm	
Tilt in Space	30° posterior-10° anterior	



Colour Choice

Blue	Pink	Lime	Red	Grey	Yellow
------	------	------	-----	------	--------

Add colour code suffix to cover options to specify colour.

					
-066	-028	-054	-022	-011	-044

Seat Unit Size Options

	Size 4 Seat Unit	Size 5 Seat Unit	
Code	3614-0114-000	3614-0115-000	
Cover (Required)	3614-0414-XXX	3614-0415-XXX	
Z Base (Required)	3614-8701-000		
Memory Foam Seat Pad (Required):	3614-0393-300		


Foot Support (MUST SELECT ONE FOOTPOST OPTION AND FOOT PLATE)

Fixed Angle Footpost	Angle Adjustable Footpost
<p>Footpost in fixed 90 degree position. 3614-5050-000</p> 	<p>Angle adjustment, particularly useful for accommodating hamstring tightness. 3614-5070-000</p> 

Flip Up Foot Plate
<p>Tool free angle adjustment for dorsiflexion and plantarflexion. 3614-5153-000</p> 


Back and Lumbar Support

(MUST SELECT ONE BACK SUPPORT AND ONE LUMBAR PAD)


Small Back Support	Medium Back Support	Large Back Support	
Support pad size: 23cm (W) x 20cm (H) 3614-2113-000	Support pad size: 27cm (W) x 28cm (H) 3614-2114-000	Support pad size: 32cm (W) x 34cm (H) 3614-2115-000	
Back Support Cover (Required): 3614-2413-XXX	Back Support Cover (Required): 3614-2414-XXX	Back Support Cover (Required): 3614-2415-XXX	
Memory Foam Pad (Optional): 3610-2390-000	Memory Foam Pad (Optional): 3610-2392-000	Memory Foam Pad (Optional): 3610-2393-000	

Small Lumbar Support Pad	Large Lumbar Support Pad	
18cm wide x 8.5cm high 3614-2602-000	24.5cm wide x 10cm high 3612-2602-000	


Hip Belt

Small 4 Point Hip Belt	Large 4 Point Hip Belt	
Pad width: 35cm 3615-6402-000	Pad width: 50cm 3615-6403-000	

Hip Supports

Hip Support Pads	
24cm Deep x 10cm High 3614-1050-000	
Covers for Hip Support Pads: 3614-1074-XXX	
Cover for Hip Support Bracket: 3614-1470-000	



Leg Supports

Abduction Pad	Abduction Block	Abduction Block	
Gentle prompt for use under seat cover.	Size 1 Length: 180mm Height above Seat: 75mm Overall height: 155mm Width Front: 100mm Width Rear: 85mm	Size 2 Length: 200mm Height above Seat: 90mm Overall height: 165mm Width Front: 100mm Width Rear: 85mm	
3615-1690-000	3615-1651-000	3615-1652-000	

Leg Control Supports

Allows control of leg position independently of pelvic position			
Size 4 Mounting Bracket 3615-1854-000	Size 5 Mounting Bracket 3614-1855-000		
Leg Control Pads: 3615-1861-000			
Covers for Leg Control Pads: 3615-3171-XXX			

Footplate Pad

Footplate Pad		Box Style Footplate	
Attaches to footplate for softer surface. 3615-5302-000		Provides a level of control along with freedom of movement. 3614-5262-000	



Sandals

Size 2	Size 3	Size 4	
22cm(L) x 9.5cm(W) 5356-6082-000	27.5cm(L) x 10.5cm(W) 5356-6083-000	32cm(L) x 11cm(W) 5356-6084-000	

Sandal Raiser Blocks

Size 2	Size 3	Size 4	
5356-6092-000	5356-6093-000	5356-6094-000	

Head Supports

Multigrip - 1 Link	Multigrip - 2 Link	Multigrip - 3 Link	
Single link wings for some degree of lateral support. 33cm W x 5cm D x 7.5cm H 5356-4601-000	2 Links in each wing for extra support and positioning. 47.5cm W x 5cm D x 12cm H 5356-4602-000 	3 adjustable links in each wing for ultimate lateral headrest control and comfort. 62cm W x 5cm D x 12cm H 5356-4603-000	
Wipeable Cover (Optional) 5356-4661-000	Wipeable Cover (Optional) 5356-4662-000	Wipeable Cover (Optional) 5356-4663-000	

Trunk Supports

Short Slim Support Pads

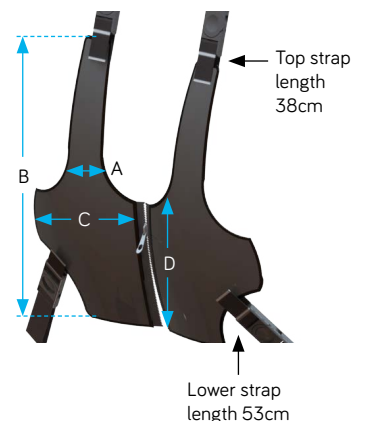
Short lateral trunk supports.		
Size 1 12.5cm (D) x 7.5cm (H) 3614-3205-000	Size 2 16cm (D) x 11cm (H) 3614-3204-000	
Cover: 3615-3171-XXX	Cover: 3615-3172-XXX	

Flexi Laterals with Strap

Flexible PU pads act as a wrap around support with adjustable chest strap.				
Size 1 18cm (D) x 8cm (H) 3614-3251-000	Size 1 Long 22cm (D) x 8cm (H) 3614-3252-000	Size 2 22cm (D) x 11cm (H) 3614-3253-000	Size 3 32cm (D) x 14cm (H) 3614-3254-000	
Cover: 3615-3271-XXX	Cover: 3615-3272-XXX	Cover: 3615-3273-XXX	Cover: 3614-3254-XXX	

Waistcoat Harness

Size 2	Size 3	Size 4
A 5cm B 32cm C 14cm D 15.5cm	A 6.5cm B 37cm C 17.5cm D 18cm	A 6.5cm B 37cm C 17.5cm D 18cm
3615-6702-000	3615-6703-000	3615-6704-000



Shoulder Supports

Shoulder Protractors

Angle adjustable shoulder supports for promotion of function and activity.
3612-2752-000



Cover: 3614-2762-XXX

Tray Table & Arm Supports

Arm Supports

Support for the upper limbs, required for mounting tray table.
3614-5512-000



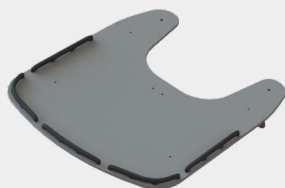
Cover: 3614-5572-XXX

Arm Support Mounting Bracket

Bracket required for mounting arm supports.
3614-5530-000

Tray Table

Useful surface for work, feeding or play.
3614-7103-000



Half Tray Padding

3614-7133-000



medifab

Distributed by Medifab Ltd

26 Pardoe Street,
East Devonport,
Tasmania, 7310

1300 543 343

solutions@medifab.com

medifab.com



DISTRIBUTED BY:

Script: Jenx Multiseat_20231129_AU