



medifab

Shaping Better Lives

## Zippie IRIS

Ultimate Paediatric Tilt-In-Space Manual Wheelchair

Cutting-edge  
tilt-in-space technology  
designed just for kids



The Zippie IRIS uses tilt-in-space technology to rotate the seat frame around the user's centre of gravity.

This rotational system provides the shortest possible wheel base without compromising stability. It also ensures a smooth and controlled rotation. The Zippie IRIS also comes with the True Fit Program, a complete growth package for free.

Eliminate the need for exposed cables with the Foot Release Tilt Actuator. Never again worry about cable systems getting in the way.

Ability to grow the chair frame as the child's needs change. You can adjust the centre-of-gravity/centre-of-rotation and depth as needed and increase the width with just a few parts.

#### **Additional Features Include:**

- Two rotation ranges to optimise positioning needs.
- New and improved hub lock with Push-Button Wheel Lock access technology.
- Height adjustable push handle.
- Swing-in/swing-out footplates.
- Single post arm support.
- Many frame colour options to pick from!



# Functional Benefits

## medifab Upgrades

Upgrade your rear wheels to spoke mags, add impact guards, and many more ways to customise! Refer to our Script Form.



## Zippie Z-Finity Footplate

Adjustable Zippie Z-Finity footplate to cater for the different needs of the user.



## Push-button Hub Locks

Push-button hub locks located on the back canes.



## Pneumatic Castor Option

Refer to the Medifab Zippie IRIS Script Form.



## Foot Release Tilt Actuator

The Foot Release Tilt Actuator eliminates exposed cables, reducing potential for injury to the user.

# 40° or 55° of Intelligent Tilt-In-Space Technology

With patented Intelligent Rotation in Space Technology, the IRIS seat frame rotates around the child's center of gravity. The rotation arm was designed specifically for paediatric users to ensure a smooth tilting motion.

The IRIS also helps children remain comfortable and secure while tilting, and it is easy for parents and caregivers to control.

Available with 40° or 55° rotation ranges that can be set to achieve up to 45° or 60° of posterior rotation, the IRIS offers superior positioning capabilities.



# Growth Capabilities

The IRIS is designed to maintain proper support for your child as they grow.

The rigid frame option is available with width-adjustable strut tubes.



## True Fit Growth Programme

Additionally, through the True Fit Growth Programme, the original Zippie IRIS owner qualifies for one free growth kit within 5 years.

The growth kit includes all parts and components needed to adjust the seat width/depth of the chair. (Not available with the Zippie IRIS SE models).



# Medifab Standard Package

## Package includes:

- True Fit Growth Programme
- Tie downs
- Width adjusting system
- Short, medium or long seat frame
- 5" x 1.5" Semi pneumatic front castors
- 16" Rear mag wheels, pneumatic
- 90° Legrest hangers with angle adjustable footplates
- Offset hanger mounts
- Single post height adjustable arm rests with full length pads
- Height adjustable push handle
- Growable seat pan
- Anti-tips
- Black opal wheelchair frame colour
- Foot operated tilt
- Foot operated brakes
- Spex 4-point belt

## Available in short, medium & long:

Short seat depth range: 10-14"

Medium seat depth range: 12-16"

Long seat depth range: 14-18"



1562-0010-090	10" wide short frame package
1562-0110-090	10" wide medium frame package
1562-0112-090	12" wide medium frame package
1562-0212-090	12" wide long frame package
1562-0214-090	14" wide long frame package

**Medifab package sizes are stocked configurations.**

To script a Zippie IRIS to suit, refer to the script forms available on our website:







# Accessories for Caregiver Convenience

Available with a wide variety of options to help you manage daily activities involving your child's care.

The Foot Release Tilt Actuator eliminates exposed cables. Push-button hub locks located on the back canes are compact, easy to access, and easy to operate for any caregiver. Standard with the Height Adjustable Push Handle, the Angle Adjustable Stroller Handle has 260° of angle adjustability to fit varying caregiver heights and to enable pushing from a tilted position.



Spoke guard options & graphic covers for 22" & 24" wheels

More in our Wheelchair Catalogue!



Canopy options  
for rain or sun



Wheelchair  
frame colours

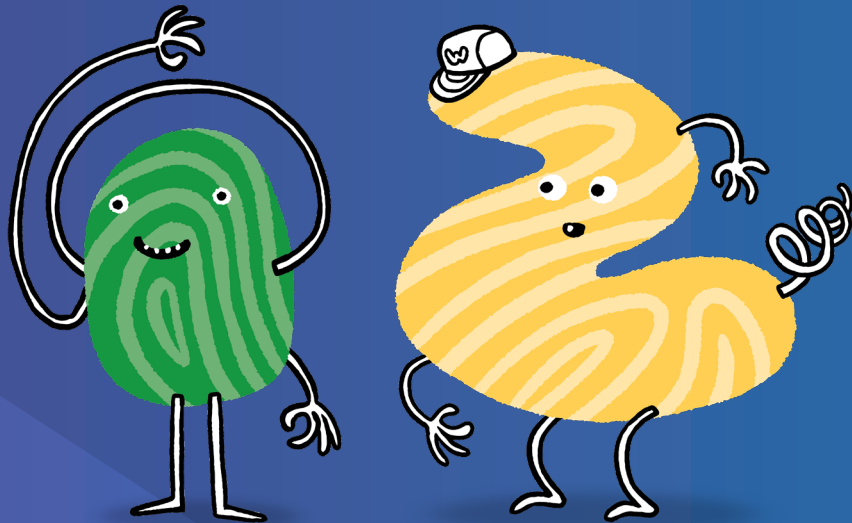
260° adjustable  
stroller handle



# Works well with Wonderseat

“Goes together like cupcakes and frosting”

Pair your Zippie IRIS with a functional and comfortable seating system! Designed especially for kids who want to explore the wonderful world around them, the Wonderseat Space paediatric seating system from Spex provides the support and comfort your child needs to make the most of their new set of wheels!





# Wheelchair Specifications



	Measurements
Degrees of Tilt	<b>40°:</b> -5-35°, 0-40°, +5-45° <b>55°:</b> -5-50°, 0-55°, +5-60°
Frame Width Range	10"-18"
Frame Depth Range	10"-18"
Back Support Height	<b>Fixed:</b> 19", 22", 25" <b>Adjustable:</b> 16"-22", 19"-25" <b>Reclining:</b> 21", 24"
Seat to Floor Height	13"-19"
Seat to Floor Height (with drop seat)	11"-17.5"
Weight Capacity	102kg
Product Weight (excluding removable items)	10kg
True Fit Growth	Yes
Warranty	Life time warranty on wheelchair frame – 1 year on parts.
Frame Material	Aluminium
Centre of Gravity Adjustment	6"

**Transport Certified** All Zippie IRIS Wheelchairs are suitable for transport in a vehicle.



medifab

[solutions@medifab.com](mailto:solutions@medifab.com)

[medifab.com](https://medifab.com)

DISTRIBUTED BY: