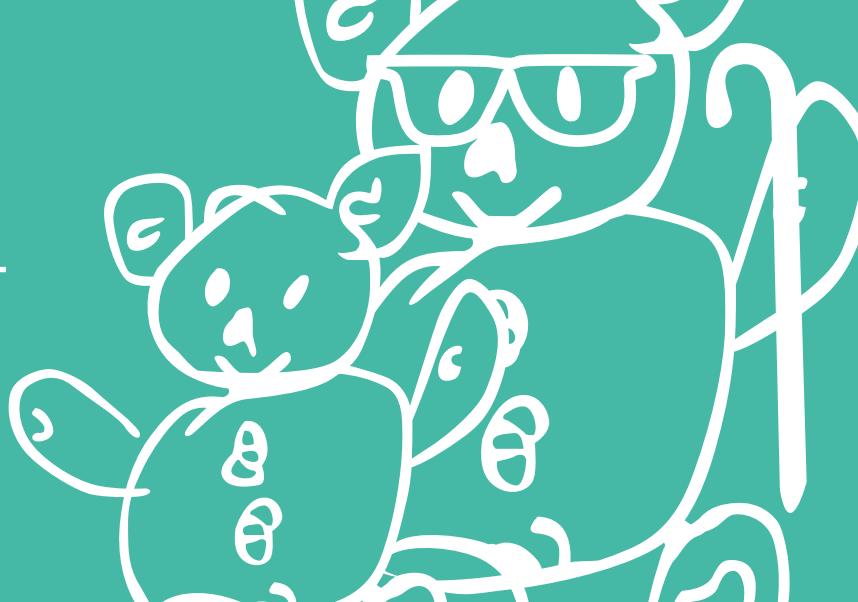


Top to Toe Stabilizing Mesh Base

INSTRUCTIONS FOR USE



MANUFACTURED BY SIMPLE STUFF WORKS ASSOCIATES



PLEASE NOTE

It is unsafe to assemble and use the equipment without **fully reading** the instructions

1. User Assistance

If you are experiencing problems with any part of your sleep system, refer to troubleshooting section and the online video.

If you cannot find the answer contact us:

UK Telephone number : **01827 307870**

USA Telephone number : **1-888-213-8416**

Support Email : **admin@simplestuffworks.co.uk**

Simple Stuff Works

UK

Simple Stuff Works Associates Ltd
Units 4 and 5, Cavendish
Tamworth
Staffs
B79 7XH

USA

Simple Stuff Works Inc.
One Commerce Centre,
1201 Orange St #600,
Wilmington,
New Castle,
Zip Code 19899
USA

Product Info

The product in this specific manual is the **the Stabilizing Mesh Base System** as part of **Mattress Flotation Therapy**

Product code : **IKY**

Device listing number : **D258510**

Proprietary Name : **Non-powered Sleep System**

Regulation Description : **Non-powered flotation therapy mattress**

Other Useful Contacts

Please fill in accordingly:

Home medical equipment supplier :

Home healthcare agency :

Doctor :

2. Table of Contents

1. User Assistance	1
2. Table of Contents	2
3. Warnings and Cautions	3
4. Purpose of the Device	5
5. Description of the device	6
6. Environmental conditions that affect use	6
7. Set up instructions of the device	7
8. Check out procedures	8
9. Operating instructions of the device	8
10. Cleaning instructions	11
11. Maintenance instructions	12
12. Storage of the device	12
13. Troubleshooting section	13
14. Summary page	14
15. Index	15
16. Date of writing the manual	16
17. Accessories	16

3. Warnings and Cautions

A warning is a statement that alerts users to the possibility of injury, death or other serious adverse reactions.

! WARNING

The Mesh Sheet is not to be eaten or placed in any orifice

1. This could result in harm to the individual.
2. The sheets should never be directly in contact with the patient's body, the sheets should always be covered by the cotton sheet.
3. If this is considered a risk then an alternative to be sought from the registered health professional.

! WARNING

The Mesh Sheets should not be exposed to heat, for example, a naked flame

1. This could result in burns to the individual and damage to the product.
2. Establish and remove the source of the heat.
3. If this is considered a risk then an alternative is to be sought from the registered health professional.

A caution is a statement that alerts users about the possibility of a problem associated with use.

! CAUTION

Only use Simple Stuff Works components and accessories

1. Any unauthorized use of the system may put the patient and the care giver at risk.
2. Failure to follow these instructions will invalidate the warranty.

Warnings and Cautions

A caution is a statement that alerts users about the possibility of a problem associated with use.

! CAUTION

The Mesh Sheets should be free of objects and creases.

1. Any objects trapped between, underneath, or on top of the sheets will be a potential risk for pressure ulcer development.
2. Any creases in the sheets will be a potential risk for pressure ulcer development.
3. The user to smooth the sheets to check for unwanted objects and creases.

! CAUTION

The equipment is antimicrobial, anti-mite and antifungal, however still poses an infection control risk if used between patients.

1. Ensure the correct local infection control measures are taken if redistributing to other patients.

! CAUTION

In hot environmental temperatures pooling of body moisture can occur under the sheets as moisture is wicked away from the body.

1. An absorbent material such as an incontinence sheet should be placed under the sheets to absorb the excess moisture.

! CAUTION

Cleaning care and maintenance instructions should be followed at all times

1. Not following the instructions will result in damage to the sheet, placing the patient at risk.
2. Fully read the accompanying cleaning and care document.
3. Do not use the sheet if damage does occur and consult your registered health professional.

Warnings and Cautions

A caution is a statement that alerts users about the possibility of a problem associated with use.

! CAUTION

The equipment should only be used for the patient it was ordered for and for its intended use.

1. This could result in pain and deformity to the unintended patient.
2. Do not give any unused systems or part of to another patient. A risk assessment by a registered health professional will be required to determine the suitability of any equipment.

! CAUTION

The Mesh Sheets should **ONLY** be used on a foam mattress

1. The use of the sheets cannot be used in conjunction with a low air loss or Airflow mattress.
2. Any layer between the patient and this type of mattress has been known to increase the risk of pressure ulcers.
3. Always adhere to the manufacturers guidelines.

4. Purpose of the Device

- The Stabilizing Mesh Base Sheets form the base layer of the sleep system. You have two mesh layers, one that is fitted directly on top of the mattress and the second flat sheet that sits on top of the fitted sheet. It is in-between these two layers that the supports are placed and held in position.
- The mesh sheets come in both fitted and flat versions. Flat versions are for use in double beds or if the bed size does not fit a standard fitted sheet.
- The intended purpose of the sleep system is therapeutic positioning in the lying posture, it is a gentle therapy used by people with movement difficulties. When used correctly it may help protect and restore an individual's body shape.
- The Simple Stuff Works positioning system has no Velcro or screw action fixings so silent changes of position can be made with little disruption to the person whilst in bed.
- The additional base layers used to secure support consist of stabilizing mesh, breathable topper and a stretch cotton sheet. The positioning and use of any accessories should be determined by an appropriately qualified and registered professional.

5. Description of the device

The Stabilizing Mesh Sheets consist of two layers .

See figure 1.

The bottom layer is fitted over the mattress. The top flat mesh sheet lies on top of the fitted sheet.

In some cases you may order two flat pieces, if, for instance, someone is using the kit in a double bed. Please see our corresponding video for this.

The sheets are impregnated with SteriTouch, a hygienic medical grade material, being antimicrobial, anti-mite and antifungal.



Figure 1

6. Environmental conditions that affect use

- The properties of the system naturally wicks moisture away from the body. This may result in moisture pooling on the mattress underneath the base layers.
- In hot environmental conditions use an incontinence sheet underneath the base layers, this will absorb any moisture that is wicked away from the body.
- After moving the patient, check for objects or creases.
- Remove any objects and smooth creases.
- To transport the equipment, place all parts into a bag to ensure all the parts stay together.
- After unpacking check all parts are present and intact.

Conditions under which the device should and should not be used

- The Stabilising Mesh Base System should always be used and positioned as advised by the qualified registered health professional.
- The Stabilizing Mesh Base System should **ONLY** be used by the patient it is intended for.
- The Stabilizing Mesh Based System should **NOT** be used in conjunction with low air loss or Airflow mattresses. If in any doubt consult the mattress manufacturer's guidelines.
- The Stabilizing Mesh Base System should **ONLY** be used in conjunction with a foam base mattress.
- This Stabilizing Fitted Mesh Sheet is **NOT** suitable for a double bed mattress.
- This Stabilizing Fitted Mesh Sheet is **ONLY** suitable for a single bed or cot bed foam mattress.

7. Set up instructions of the device

List of parts

1. Fitted base sheet
2. Flat top sheet

No tools required for set up

Device placement

1. The fitted bottom sheet is placed over the foam mattress of the bed.
2. The flat top sheet is placed on top of the fitted base sheet.

! CAUTION

The mattress and sheets should be free of objects and creases.

1. Any objects trapped between, underneath, or on top of the sheets will be a potential risk for pressure ulcer development.
2. Any creases in the sheets will be a potential risk for pressure ulcer development.
3. The user to smooth the sheets to check for unwanted objects and creases.

! CAUTION

The sheets should **ONLY** be used on a foam mattress

1. The use of the sheets cannot be used in conjunction with a low air loss or Airflow mattress.
2. Any layer between the patient and this type of mattress has been known to increase the risk of pressure ulcers.
3. Always adhere to the manufacturers guidelines.

3. The care giver to ensure that there are no creases or objects on top of, below or in-between in the sheets.
4. The system is designed to be removed for cleaning and then replaced.

For assistance with set up issues refer to the corresponding video and to page 1 for our contact details.

8. Check out procedures

Check with every use or daily

- Prior to each use visually check and ensure the sheets are free from objects and creases.
- Smooth out any creases and remove objects from the sheets.
- Ensure the sheets are intact and contact your supplier for replacement advice.

For assistance with set up issues refer to the corresponding video and to page 1 for our contact details.

9. Operating instructions of the device

! CAUTION

The mattress and sheets should be free of objects and creases.

1. Any objects trapped between, underneath, or on top of the sheets will be a potential risk for pressure ulcer development.
2. Any creases in the sheets will be a potential risk for pressure ulcer development.
3. The user to smooth the sheets to check for unwanted objects and creases.

! CAUTION

The sheets should **ONLY** be used on a foam mattress.

1. The use of the sheets cannot be used in conjunction with a low air loss loss or Airflow mattress.
2. Any layer between the patient and this type of mattress has been known to increase the risk of pressure ulcers.
3. Always adhere to the manufacturer's guidelines.

Top to Toe Stabilizing Mesh Base

INSTRUCTIONS FOR USE

1. Prior to fitting the fitted sheet check the mattress for any objects and remove. Place the fitted sheet on the foam mattress of the bed, taking the elasticated corner around the corner of the mattress. Smooth any creases out of the sheet.



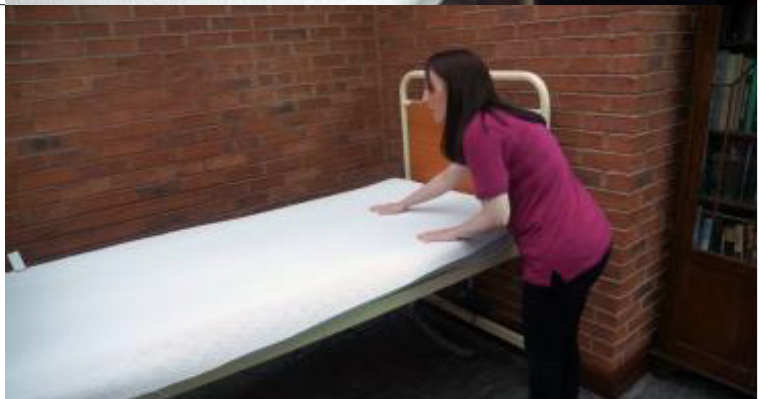
2. Place the flat sheet directly on top of the fitted sheet.



3. Smooth out any creases and check that there are no objects between or on top of the sheets.



4. Ensure the sheet covers the base fitted sheet.



Top to Toe Stabilizing Mesh Base

INSTRUCTIONS FOR USE

5. You have two layers of mesh, one that sits on the mattress and one that sits on top. It is in-between these two mesh layers that you will place your supports.



6. Bring the topper into position on top of the two mesh layers, this is placed where the majority of the body will be positioned.



7. Allow enough room for the pillow to be positioned above the topper. The system is now ready for the cotton sheet to be fitted.








It is advised the care giver seeks training and guidance in the field of manual handling. This is not covered within this guide.

10. Cleaning instructions

The stabilizing mesh base system is a fully washable product.

- How often should the Stabilizing Mesh Sheet be washed - On soiling and enough to keep clean and fresh.
- Only **NON bleaching** household washing powder can be used to wash the stabilizing mesh sheet.
- The Stabilizing Mesh Sheet should not be washed above forty degrees Celsius, **<40C**.
- The Stabilizing Mesh Sheet should fit into a standard house hold washing machine drum, **not** a top loader and should be spun on a **slow spin cycle**, 800 revs or less.
- The Stabilizing Mesh Sheet can be air dried.
- The Stabilizing Mesh Sheets should **NOT** be tumble dried.

1. Washing the system. Adhere to the manufacturer's instructions at all times.	PRODUCT	SYMBOLS
	Top-to-Toe Stabilizing Mesh	   
	WHAT DO THEY MEAN?	TEMPERATURE
	<ul style="list-style-type: none"> • Wash at maximum 40 degrees • The line underneath 40° indicates a slower spin cycle is required • Do not bleach • Do not iron • Do not tumble dry 	<p>40°C Maximum</p>
2. Take the sheets from the bed. Ready to move into the household washing machine.		

Top to Toe Stabilizing Mesh Base

INSTRUCTIONS FOR USE

3. Insert the sheets into the washing machine. Wash on a low temperature under forty degrees Celsius 40C using a mild household washing machine detergent. Ensure that the spin cycle is 800 revs per minute or less.



4. Once the washing has finished remove and hang up to air dry. Once dry the sheets can be placed back on the bed if needed or put in storage.



11. Maintenance instructions

- Check that the seams are intact before use, visually inspect.
- Check before every use that there are no objects within, between, on top of or underneath the base system.
- If pooling of moisture occurs ensure that an incontinence pad is placed on the base of the mattress to absorb excess moisture.

12. Storage of the device

1. The system will deteriorate if stored in wet or damp conditions.
2. It should be stored in a room above freezing but below 90 degrees Fahrenheit. For extended storage then you need to store in plastic, sealed containers.

13. Troubleshooting section

The healthcare professional emergency assistance service should be contacted immediately, if the troubleshooting reveals a patient health problem rather than a device problem.

Any adverse events should be reported using the contact information on page 1

Anticipated problems	Solution to the problem
1. During very hot environmental conditions there may be pools of sweat found on the mattress. This is due to the fabric wicking moisture away from the body.	1. Place an incontinence sheet underneath the fitted base sheet. This will collect excessive moisture. Monitor the patient’s skin condition when using this.
2. The development of a pressure point, due to a crease in the material.	2. Ensure that the fitted base sheet and the flat top sheet are free from creases.
3. The development of a pressure point, due to an object under or between the sheets.	3. Ensure that the fitted base sheet and the flat top sheet are free from any objects.
4. If the material gets damaged due to washing at temperature exceeding 40 degrees.	4. Comply with the washing, drying and care of instructions of the Stabilizing Mesh Base Fitted Sheet. Contact your supplier for a replacement see page 1.
5. If the material gets damaged or torn.	5. Comply with the washing, drying and care of instructions of the Stabilizing Mesh Base Fitted Sheet. Contact your supplier for a replacement see page 1.

14. Summary page

This is not to replace the complete user's instructions and the entire manual should be read prior to using the device.

- The Stabilizing Mesh Base Sheets form the base layer of the sleep system. You have two mesh layers, one that is fitted directly on top of the mattress and the second flat sheet that sits on top of the fitted sheet. It is in-between these two layers that the supports are placed and held in position.

! CAUTION

The mattress and sheets should be free of objects and creases.

1. Any objects trapped between, underneath, or on top of the sheets will be a potential risk for pressure ulcer development.
2. Any creases in the sheets will be a potential risk for pressure ulcer development.
3. The user to smooth the sheets to check for unwanted objects and creases.

! CAUTION

Only use Simple Stuff Works components and accessories

1. Any unauthorized use of the system may put the patient and the care giver at risk.
2. Failure to follow these instructions will invalidate the warranty.

! CAUTION

The sheets should ONLY be used on a foam mattress

1. The use of the sheets cannot be used in conjunction with a low air loss or airflow mattress
2. Any layer between the patient and this type of mattress has been known to increase the risk of pressure ulcers.
3. Always adhere to the manufacturers guidelines.

- The intended purpose of the sleep system is therapeutic positioning in the lying posture, it is a gentle therapy used by people with movement difficulties. When used correctly it may help protect and restore an individual's body shape.
- The Simple Stuff Works positioning system has no Velcro or screw action fixings. So silent changes of position can be made with little disruption to the person whilst in bed.
- The additional base layers used to secure support consist of stabilizing mesh, breathable topper and a stretch cotton sheet. The positioning and use of any accessories should be determined by an appropriately qualified and registered professional.

Contact phone number for assistance _____

15. Index

No	Section	Page Number
1	Accessories	16
2	Checkout procedures	8
3	Cleaning instructions	11
4	Date of writing the manual	16
5	Description of the device	6
6	Environmental factors that affect the use	6
7	Index	15
8	Maintenance instructions	12
9	Operating instructions of the device	8
10	Purpose of the device	5
11	Set up instructions of the device	7
12	Storage of the device	12
13	Summary page	14
14	Table of Contents	2
15	Troubleshooting	13
16	User assistance information	1
17	Warnings and Cautions	throughout

16. Date of writing the manual

October 2016

17. Accessories

All accessories that can be used have their individualized manuals and instructions, they are listed below. Individual manual to be fully read and understood. Not all of the accessories below will be considered suitable or appropriate, this will be determined by the registered health professional.

1. Mattress topper	8. Horseshoe Pillow
2. Fitted Cotton Sheet	9. Neck Pillow
3. Flat Cotton Sheet	10. Sausage Pillow
4. Fibre Wedges	11. Temperature Regulating Pillow
5. Lateral Supports and Padded Covers	12. Supine Stabilizer
6. Plastazote Wedges	13. Side Lying Leg Support
7. Foot Supports	