

Parts list and explosion views of your new **Hannah** - care cot



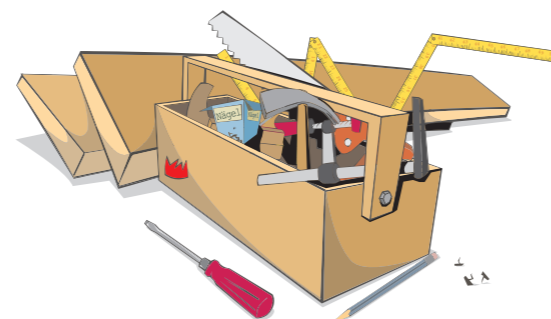
Pos.	Qty.	Designation
Wooden surround		
1	2	side frame
2	1	back part
3	2	folding door
4	2	connecting architrave 90mm
5	1	architrave 150mm
6	1	front aperture
Fittings		
7	14	threaded bars M8x140mm
8	6	threaded bars M8x110mm
8	8	threaded bars M8x110mm, (for Hannah 135/170)
9	14	transverse nuts
10	20	brass caps
10	22	brass caps, (for Hannah 135/170)
11	1	allen key
Sleeping platform		
12	1	sleeping platform with slatted frame
13	1	manual control switch*
14	1	security switch box*
15	4	screws for switch box (4x25mm)
16	1	mounting for power cable* *(only with electronic sleeping platform)
External door security locking system		
17	2	consoles
18	1	lock bar
Optional		
19	1	lifter
20	4	castors


Care cots for children

...the original!



Assembly Instructions
for your new **Hannah** - care cot




KayserBetten

Rieper Straße 12
D-29683 Dorfmark
Telefon: +49 5163 / 290044
Telefax: +49 5163 / 290049
www.kayserbetten.de
info@kayserbetten.de



These are our mechanics Robert and Stefan. They will help you to assemble your KayserBed!



Assembly Instructions for your new Hannah - care cot

The assembly must be on a level surface.

If your bed is equipped with a set of castors then please screw them first into the holes drilled under the side frames (drawing left above).

Please lay the architraves ④ + ⑤ and the back part ② on the ground in order to push in the transverse nuts ⑨. Now screw in the threaded bars ⑦.

Set up one side frame ①. At first, install the rear architrave ④ by putting it with the threaded bars through the lower drilled holes of the side frame. The wooden pegs must fit properly into the drillings. Bolt the architrave with a brass cap ⑩. Now, the construction stands steady already!

After this, bolt the front architrave ④ (with the groove upward) to the side frame. Now push the aperture ⑥ into the groove of the installed architrave, put the upper architrave ⑤ onto the aperture and bolt them to the side frame as well.

Set up the second side frame ① so that the architraves ④ + ⑤ can be hung in. Secure this connection with loosely screwed brass caps.

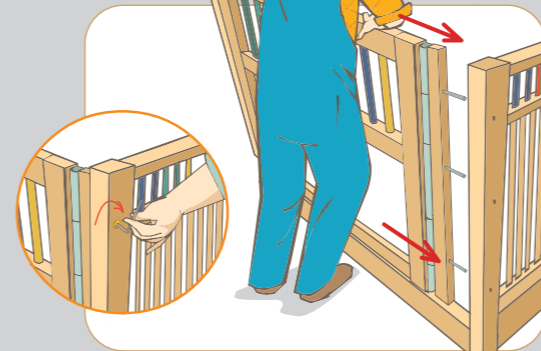
Now the back part ② has to be put between the side frames. Fit it into the first frame and then push the second side frame onto the threaded bars (drawing below).

(For the Hannah 135 only: Screw the lower back part with brass caps securely to the side frame. Now the upper back part has to be put on the lower one and must be screwed securely to the same side frame. After this, screw the second side frame with brass caps.)

Secure all threaded bars with brass caps. In order to avoid tilting, firstly screw all brass caps on one side and then those on the other side.



The bed is now ready so that the sleeping platform ⑫ can be inserted. At first, take the control units out of the packaging. Then you need a second person to help with the sleeping platform. To avoid pinching your fingers, hold it from the inside. The sleeping platform needs to be led carefully between the side frames and is laid down onto the wooden strips of the architrave and the back part. (If your cot is electronically adjustable, then please make sure that the cables are underneath in order to avoid them being trapped. Install the switch box ⑭ with the screws provided ⑮ on the exterior of a side frame (out of reach of the patient). For further information concerning the sleeping platform, please read the enclosed operating instructions).

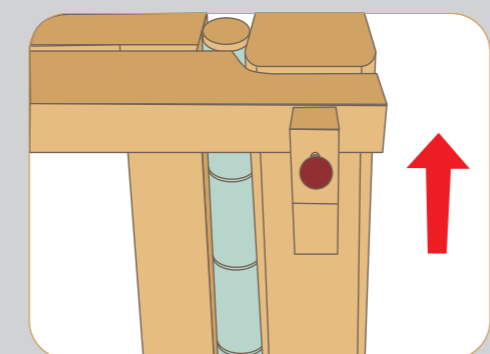


After screwing the threaded bars ⑧ into the assembly strips of the folding doors you should insert the doors with the lower guide pin into the aluminium profile of the architrave. Then push them against the side frame. Finally, screw the brass caps ⑩ onto the three threaded bars.

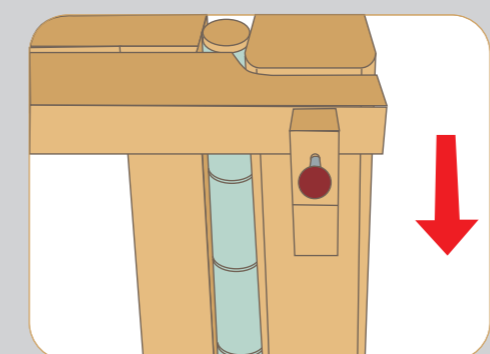


For mounting the locking bar, please put the console ⑰ in the drilled hole of the corner post on the head and foot side, adjust them and then secure this connection with screws.

Please put the first dowel on one side of the locking bar ⑱ in the console ⑰ of the corner post, then the second on the other side. The sheet metal overlaps the door slot.



You can lock the bar by pushing the (wine red) knob on the right and left side in the console. The bed is now locked.



To unlock the bed, please put the security knob out of the consoles.

Now your new Hannah-cot is ready to use.

