

KidsFlex Car Seat

Installation and User Manual



- Small:
4170-0010-020
- Medium:
4170-0020-060
- Large:
4170-0030-090

IMPORTANT CONSUMER INFORMATION NOTICE:

This manual contains important instructions that must be passed on to the user of this product. Please do not remove this manual before delivery to the end user.

SUPPLIER:

This manual must be given to the user of this product.

USER:

Before using this product, read entire manual and save for future reference.

medifab[®]

User Manual for all Kidsflex Car Seats
Manual: Kidsflex20201105

Serial Number:

Hernik

USER MANUAL

KIDSFLEX



version: 11-2020

TABLE OF CONTENTS

I. General information	Page
1.1 Introduction	2
1.2 Purpose and indication	2
1.3 Relevant information	3
1.4 Declaration of conformity	3
1.5 Warranty	3
1.6 Service and repair	3
1.7 Practical instructions	3
1.8 Installation in the car	4
1.9 Fixing the child in the car seat	4
II. Safety instructions	
2.1 Safety instructions	5
III. Handling and functions of the basic seat	
3.1 Adjusting the head rest	6
3.2 Adjusting the seat depth	6
3.3 Adjusting the angle of the back	6
3.4 Adjusting the belts	7
3.5 Adjusting the belt guide	7
IV. Using the optional accessories	
4.1 ISOFIX-adapter	8
4.2 clamp bow	9
4.3 Security tray	10
4.4 Lateral supports	10
4.5 Abduction block	11
4.6 Angular adjustment	11
4.7 Foot rest / foot roll	12
4.8 Swivel	12
4.9 Protection mat	13
4.10 Belts to connect the chest straps	13
V. Guarantee	14
VI. Labeling	14
VII. Maintenance & product care	
7.1 Pull off the cover	15
VIII. Technical characteristics	16

I. General information

1.1 Introduction

You have chosen the car seat „KIDSFLEX“ and get hereby a high quality product from our house. We would like to thank you for your trust in us.

To make sure you find joy with this product and to ensure it helps you to make everyday life easier, we present you this manual. It shows you the correct and simple usage and the necessary care and maintenance. To avoid damage due to operator error and to ensure best use, please read the following instructions carefully. If you have any questions or problems, please contact your dealer. We wish you a trouble-free use and hope that our product meets your expectations.

We reserve the right to make technical changes to the version described in this manual.

Before installing in your car and using it for the first time, please read and follow the installation instructions on pages 4 - 7. Please ensure that the instructions for use remain with the product and are therefore available to everyone who uses the seat.

Yours

HERNIK GmbH

1.2 Purpose and indication

The KIDSFLEX was developed for the transport of children with special needs in cars. Children with poor head or trunk control (eg infantile cerebral palsy, muscular dystrophy, hypotension) can be supported in their posture by means of individually positioned thorax pads and special upholstery which ensures a safe transportation.

Important optional accessories can be used to address specific needs such as: the seat angle or the installation of a stable abduction wedge or a footstool. More in chapter IV.

I. General information

1.3 Relevant information

The KIDSFLEX car seat for disabled children is built for use on the back seat of a car and requires an existing, functioning 3-point seat belt. The seat can be attached behind the front passenger or behind the driver's seat.

In addition to the 3-point seat belt of your car, the car seat is equipped with a 5-point chest and shoulder belt that offers your child additional support.

1.4 Declaration of conformity

HERNIK GmbH declares in sole responsibility that the car seat "KIDSFLEX" complies with the Essential Requirements (Appendix 1 of Directive 93/42 EEC). The product is marked with the CE mark according to the above mentioned directive.

1.5 Warranty

A warranty can only be accepted if the product is used under the specified conditions and for the intended purposes. The manufacturer is not liable for damage caused by components and spare parts which were not approved by the manufacturer.

1.6 Service and repair

Service and repairs on the KIDSLFLEX may only be carried out by specialized dealers. If you have any problems, contact your local dealer. For repairs you will only receive original spare parts.

1.7 Practical instructions

The car seat will be delivered fully assembled. Upon delivery, the dealer will instruct the user how to use the device by using the manual. The specialist dealer should install together with the user the car seat in the car and if available adjust the Isofix strap or the clamp.

In order to achieve an optimal sitting position, it is necessary to adjust the car seat individually to the circumstances of the child. This should always be done by the dealer.

After instruction, the user should carry out all functions as well as installation and removal of the car seat in the presence of the specialist dealer.

I. General information

1.8 Installation in the car

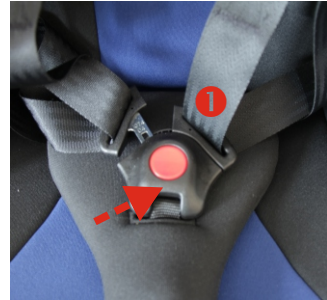
- Place the child seat on the vehicle seat. Make sure that the backrest lies flat against the backrest of the vehicle seat.

Tip! If the headrest of the vehicle seat disturbs, remove it.

1.9 Fixing the child in the car seat

- Open the 5-point-belt ❶ and make sure that the straps are exposed.
- If a swivel adapter is available, rotate the car seat. This makes it easier for you to put the child in the car seat.
- Swivel the optional thorax pads ❷ out by pressing the red dots.
- Put the child in the car seat.
- Close the 5-point belt. ❶
- Rotate (if swivel adapter is available) the car seat back until the locking audibly snaps into place.
- Now thread the 3-point seat belt into the belt guide ❹ and guide the belt through the open belt guide ❸ left/right.
- Lay the belt over the child and the car seat and thread it on the other side left/right through the second open belt guide ❸. Snap the seat belt buckle tongue in the car's belt buckle.

Make sure that the vehicle belt is not twisted. Otherwise the full protective effect of the restraint system is not given.



ATTENTION! Instructions on how to correctly adjust the headrest, the belt guide and the ISOFIX can be found later in the user manual under point 3.1, 3.4 und 4.1.

II. Safety instructions

- Before use, the components must be checked for perfect function and condition.
- The instructions for use must always be carried on the child car seat.
- The safety of your child is only guaranteed if the seat is installed correctly and if the child is fixed exactly.
- The straps must be laid tight and without twisting.
- The 3-point safety belt is to be guided through the provided belt guides and is supposed to surround the seat tightly.

Please check:

- A) whether the seat belt is securely placed in the belt guide
- B) whether the belt buckles are locked correctly
- C) that no textiles are impacted
- Make sure that no solid objects like pins, belt buckles, etc. are placed between child and seat belt. This could lead to injuries in the event of accidents.
- Explain to your child how important it is to be well-secured and that the course of the straps do not change. It shouldn't pull on the straps nor open the belt buckles.
- Do not make any changes to the car seat, otherwise you risk your child's safety.
- The car seat must not be damaged by moving parts in the car or through doors.
- Never leave your child alone in the child car seat.
- Inform your passengers how your child can be taken out of the seat after an accident.
- After an accident, the entire child car seat has to be renewed.

III. Handling and functions of the basic seat

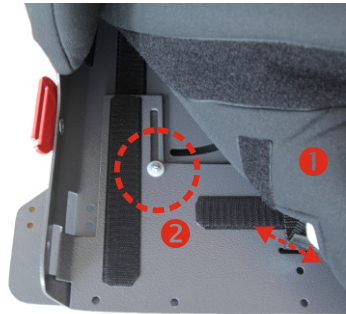
3.1 Adjusting the head rest

- Loosen the cap nut on the back plate.
- Adjust the headrest to the desired height.
- Fix the cap nuts again.



3.2 Adjusting the seat depth

- Loose the seat cushion ❶ from the Velcro to get access to the cap nuts ❷.
- Open the two cap nuts ❷ on the seat plate.
- The position of the seat depth plate can now be adjusted to the desired seat depth.
- Screw the two cap nuts tight and attach the seat cushion ❶ again with the Velcro.



3.3 Adjusting the angle of the back

- Open the two quick release levers ❸ on the left and right of the child car seat.
- Put the back plate to the desired angle and close the levers.



III. Handling and functions of the basic seat

3.3 Adjusting the shoulder and lap belts

- Press the red button **1** and pull the lock parts out of the lock.
- The individual parts of the belt must be exposed.
- Put your child in the car seat. Make sure that your child sits at the very back of the seat.
- Now close the 5-point belt buckle.
- Pull the lap belt **2** and both shoulder belts **3** tight.
- Close and open the strap again to check that the straps are tight.
- Correct the belt length if your child is wearing different clothes.



3.4 Adjusting the belt guide

- Loosen the two cap nuts on the back plate at the front so that the screws **4** can be opened.
- Adjust the belt guide **5** in the grid, so that you reach the desired position.
- Now tighten the screws **4** again and fix the nuts on the back plate at the front.

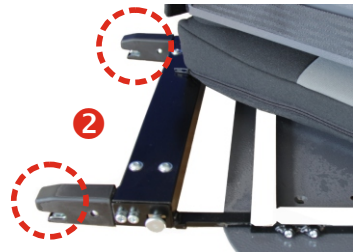
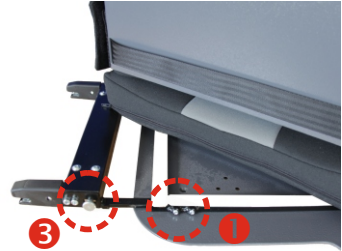


IV. Using the optional accessories

4.1 ISOFIX adapter

Installation:

- Let the installation of the seat and its adjustment be demonstrated to you by the technician.
- Open the setscrews ❶ on the left and right and pull the bracket out to the rear.
- Adjust the back rest of the car seat to the required angle. Slide the ISOFIX adapter on both sides backwards in the direction of the backrest until you hear the locking of the two ISOFIX tongues ❷ in the vehicle's ISOFIX mounting (two clicks).
- Push the car seat towards the backrest of the vehicle until both touch and are slightly under tension. This prevents vibrations while driving.
- Close the two setscrews ❶ left and right. In addition, the two ISOFIX tongues must be protected against unattempt opening, which is why both screws ❸ must be tightened.
- Ensure that both ISOFIX tongues are engaged by a double-sided pulling test.



Removal Note:

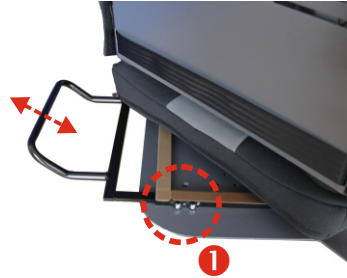
- Open the two screws ❸
- Move them forwards in the direction of the car seat, releasing the grid connection of the system. It may be necessary to compensate for the pressure of the seats padding so that the connection can be solved.
- The car seat can now be removed from the vehicle.

IV. Using the optional accessories

4.2 Clamp bow

Installation:

- Let the installation of the seat and adjustment of it be shown to you during the delivery.
- Open the setscrews ❶ on the left and right and pull the bracket to the rear.
- Adjust the back rest of the car's seat to the required angle. Now push the clamp on both sides backwards in the direction of the backrest, until it sinks into the gap of the car seat and seat upholstery and remains firm.
- Push the car seat against the backrest of the vehicle until it rests flat.
- Now close the two setscrews ❶ left and right.



ATTENTION! Whether the crank of the bracket has to be directed upwards or downwards depends on the construction of the respective car seats.

Removal Note:

- Pull the car seat including the clamp out of the gap of the car seat.

IV. Using the optional accessories

4.3 Security tray

Installation:

- Let the installation of the security tray be shown to you during the delivery.
- Put the security tray **1** on the car seat after sitting your child into it and strapping it on.
- Secure the padding using the supplied Velcro straps **2**, which are fastened to the back of the car seat.
- Your child's arms should rest on the table, which leads to an upright seating position. This supports the upper body.
- Make sure that no objects are placed on the upholstery which could be dangerous during a braking maneuver.



4.4 Lateral supports

- Open the screws of the pads **3** on the back of the back plate.
- Position the pads in the desired slots.
- Fix the screws **3** again.



IV. Using the optional accessories

4.5 Abduction block

- The abduction wedge ② helps your child to reach a predetermined distance between the knees. In order to loosen or tightening the 5-point belt, the wedge must be removed. Open the clamp ① and remove the wedge upwards.
- The wedge should always be used while driving (if chosen as an option), otherwise your child could be injured by the bracket.
- The lever ① can be changed in its position by gently pulling it forward without moving the screw connection. Make sure it is up and not out of the way, otherwise your child's calves may come into contact with it.



4.6 Angular adjustment

- If the seat angle provided by the vehicle seat is insufficient, the seat angle of the car seat can be increased by the (extended) child seat angle adjustment. For this purpose, the screw ③ left and right has to be opened and another hole to be selected. Then tighten the screws back.
- For safety reasons, no quick release is possible here!



IV. Usage of the optional accessories

4.7 Foot rest / foot roll

- The tabs **1** are fixed below the seat in the base mount, using grub screws. This is also, how the depth can be adjusted.
- The inclination of the handrails can be varied by opening the quick release lever **2**. Please make sure that the levers are then in a position that do not lead to injury.
- To adjust the height of the footrest, open the grub screws **3** on the left and right. Now the height can be changed steplessly and the grub screws tightened again.



4.8 Swivel

- To facilitate the daily transfer to the vehicle, we recommend our swivel adapter, which allows the car seat to swivel outwards by 90°. For technical reasons, only **ONE** direction of rotation is possible. For a later change in the other direction, the car seat must be converted by HERNIK or an authorized specialist. The use of the ISOFIX adapter or clamp bow is strongly recommended!
- To rotate the chair, pull the snapper **1** up and move the chair at the same time. The optional footrest remains in place to avoid collisions with the front passenger seat and the B-pillar. Pay attention to your child's legs as you turn!
- After the transfer, simply turn the KIDSFLEX back to the starting position and pay attention to the „click“-sound, when the stainless steel tongue **2** locks in the snapper again.



IV. Usage of the optional accessories

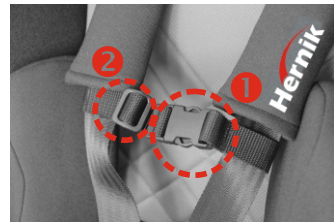
4.9 Protection mat

- Position the protection mat on the car seat without blocking the ISOFIX connectors.
- Place the KIDSFLEX in the center of the protective mat and secure it as described in chapter 4.1.



4.10 Belts to connect the chest straps

- Position the belt at the height of your child's chest. Keep a sufficient distance to the neck!
- To prevent the belt from slipping, the inside is equipped with Velcro. To loosen it, loosen it with your fingers.
- Now adjust the width of the belt ② by threading the belt out of the slider ① and then widening the belt lock accordingly.
- Now secure the loose end of the belt again using the slider ② to prevent the belt from loosening unintentionally.



V. Garantie

Hernik products are designed and manufactured in accordance with strict quality standards. If, in exceptional circumstances, you have cause for complaint, Hernik GmbH guarantee in accordance with the terms and conditions of delivery:

- 24 months warranty on all solid parts, from date of delivery.
- 12 months warranty on all moving parts, from date of delivery.

For parts that were not manufactured by Hernik GmbH, please refer to the warranty policy of the respective manufacturer (Römer-Britax Kindersicherheit GmbH). Claims under this guarantee are subject to the device being properly installed and used in accordance with the instructions provided.

Warranty is void where modifications or improper repairs, without prior consultation with the manufacturers are carried out. Warranty is void where a device is improperly fitted.

Further claims, for whatever legal reason, in particular, claims for direct or indirect damages are excluded.

VI. Labeling

On the back you'll find the following labeling:



VII. Maintenance & product care

7.1. Pull off the cover

The cover can be removed and washed with a mild detergent in the fine washing program of the washing machine (30 °C). Please refer to the instructions of the washing label of the cover.

The plastic parts can be cleaned with soap and water. Do not use harsh cleaning material (such as solvents).

DANGER! The child safety seat must not be used without the seat cover.

- Remove the headrest (if available) by loosening the screw.
- Now loosen the shoulder straps from the Velcro strip on the inside of the back plate.
- The back cushion can now be removed.
- Open the zipper and pull off the covers.
- For pulling of the seat cushion, first loosen the belt connection between the belt lock and the seat plate.
- Remove the seat plate, open the zipper and pull off the covers.



VIII. Technical characteristics

	size 1	size 2	size 2XL
total height	74 cm	80 cm	90 cm
crown height	67 cm	73 cm	82 cm
back height	43 - 51 cm	49 - 57 cm	58 - 69 cm
seat width	31 cm	35 cm	40 cm
seat depth (adjustable)	28 - 33 cm	34 - 39 cm	40 - 46 cm
lateral support height (small)	26 - 36 cm	26 - 36 cm	34 - 44 cm
lateral support: height (large)	30 - 40 cm	30 - 40 cm	38 - 48 cm
distance of lateral supports	16 - 28 cm	19 - 32 cm	24 - 37 cm
weight	8,2 kg	8,9 kg	12,3 kg
capacity	22 kg	36 kg	75 kg

Standard equipment:

- 5-point-harness with impact pad and shoulder padding
- integrated headrest
- adjustable seat depth
- three-part basic cover, removable and washable at 30 °C
- belt guide (assembled on the right or left)
- stepless back angle adjustment
- Base frame to accommodate a footrest, a clamp bow or Isofix adapter



HERNIK GmbH
Auf der Gröb 2c
83064 Raubling • Germany

☎ +49 8035-9580448 • 📠 +49 8035-9580446
✉ info@hernik.de • 🌐 www.hernik.de



New Zealand Head Office
22 Detroit Drive,
Rolleston 7675
Call 0800 543 343

Australian Head Office
26 Pardoe Street,
East Devonport, TAS 7310
Call 1300 543 343

solutions@medifab.com

www.medifab.com

Your enthusiastic distributor is