



## ADJUSTABLE SEATING FOR PEDIATRIC CLIENTS

The JAY GS® cushion incorporates a highly durable, stable foam base and JAY's proven fluid insert technology with the unique ability to grow with the client while maintaining proper support, making it an excellent solution for growing children and young adults.



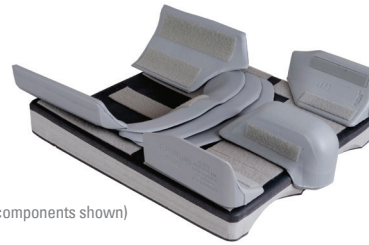
**GS Cushion**



### Closed Cell Foam Base with Built-in Growth

- Foam base requires zero maintenance, is highly durable, and can be easily modified in the field
- Includes contracture cutouts to protect the lower extremities
- Base components, fluid insert, and cover can adapt and grow to maintain proper support
  - Large well cutout allows client to sit at the front of the cushion to start
  - Shelf extension\* can be added as the client grows to increase the front length of the cushion and provide additional support for longer leg lengths
  - Foam base is topped with loop-side VELCRO® that allows optional positioning components to be moved and rearranged as the client grows

\*One shelf extension included with all GS cushions. Additional shelf extensions may be ordered separately.



(3" positioning components shown)

### Available with Extensive Selection of Positioning Components\*

- Offers optional 2" or 3" positioning components, including:
  - Lateral Pelvic Supports
  - Lateral Thigh Supports
  - Medial Thigh Supports
- Positioning components can be ordered pre-installed or can be added at a later time

\*Also available without positioning components as an Adjustable Skin Protection cushion



### JAY Flow™ Fluid Insert

- Ensures proper fluid placement beneath bony prominences to help protect the skin from breakdown
- Oversized design accommodates the foam base and positioning components as they adapt with the client
- Requires zero maintenance



### Stretch Cover with X-static® Fiber and 3DX Spacer Fabric

- Stretch material reduces surface tension to protect skin
- 3DX Spacer Fabric promotes airflow
- X-STATIC® fiber with silver threads naturally inhibits bacterial growth
- Waterfall seam reduces skin irritation at front edge of cushion provides increased comfort

### GS CUSHION SPECS

Width Range	10" to 18"
Depth Range	10" to 20"
Height	2.5" (without positioning components)
Weight	1-3 kgs
Weight Capacity	136 kgs