

# Jenx Standz 2



## ABDUCTION STANDER

SCRIPTING AND ORDERING GUIDE

Distributed by  
**medifab**

# Client Details

Client/User Name:

Date:

DOB:

## User Measurements

A Hip width

B Axilla height

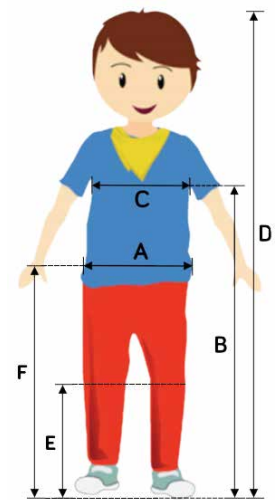
C Chest width

D Overall user height

E Heel to knee

F Hip height

User weight



## Product Specifications

Average age

5 - 14 Years

Weight capacity

70 kg

Hip width

25 - 37 cm

Hip height

50 - 95 cm

Chest width

22 - 36 cm

Chest height

82 - 116 cm

Max height

160 cm

Tilt range (90° = upright)

0° - 90°

Frame width

76 cm

Frame length

107 cm

Height off surface when horizontal

90 cm

Abduction range

30° Either Leg

Items outlined in blue are recommended as part of standard package

# Base unit

## Standz Basic Package


- 4 lockable swivel castors
- Tilt mechanism with dedicated release lever on handle with safety lock
- 0° - 30° independent abduction movement of leg posts in 5 degree increments with easy to use locking plunger
- Individual footplates with angle adjustment for plantar and dorsiflexion
- Tilt range of 5° - 90° with easy to read angle gauge
- Pelvic and trunk support boards and cover pads
- Includes tray mounting bracket

5242-0005-054

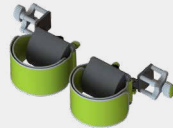



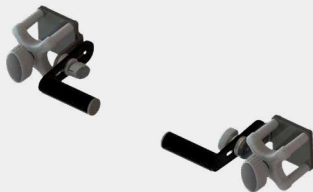
# Foot support options

Sandles				
Multi-adjustable foot supports to ensure secure placement and positioning of feet.	Size 1	Size 2	Size 3	
	5356-6081-000	5356-6082-000	5356-6083-000	
	8cm W x 17cm L	9.5cm W x 22cm L	10.5cm W x 27.5cm L	

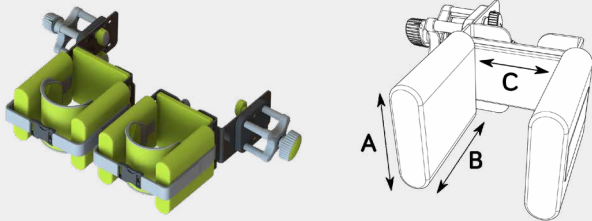
Ankle Snugs			
Additional ankle support for users that need it, featuring unique magnetic buckle fastening.	Size 1	Size 2	
	5356-6131-000	5356-6132-000	
	Inner Circumference: 12-22.5cm	Inner Circumference: 16.5-29.5cm	

# Knee support options

Multi-Axis Knee Supports			
Width, height, depth and angle adjustable supports with soft arched foam pads behind the knee and support straps. Ideal for accommodating knee flexion.	Multi-Axis Knee Support Size 1	Multi-Axis Knee Support Size 2	
	5242-1770-054	5242-1771-054	
		11.5cm W x 13.5cm H	

Knee Blocks		Knee Block Mounting Bracket	
Flexible PU knee cups, complete with padded knee straps. Adjustable for height, width, angle and depth.			
<b>Knee Blocks Size 1</b> Internal Support Size: 7.5cm W x 10cm H		Mounting bracket <b>required when using knee block option</b> for knee support.	
5356-1751-011			
<b>Knee Blocks Size 2</b> Internal Support Size: 9.5cm W x 12cm H			
5356-1752-011		5240-1720-000	

# Knee support options (continued)

Standard Knee Support	
Width, height, depth and angle adjustable supports. Provides width adjustable walls to correctly gutter the knee position. <b>Must be used with knee strap accessories.</b>	
5242-1750-054	
A: 11.5cm B: 12.5cm C: 6.5 - 9.5cm	

Standard Knee Straps			
Holds knee in position and prevents knee flexion in supine.  <b>Only compatible with Standard Knee Support.</b>	Standard Knee Straps Size 1	Standard Knee Straps Size 2	
	5242-1766-054	5242-1767-054	
	Vinyl Pad Length: 16.5 - 21cm	Vinyl Pad Length: 24 - 36cm	

Rotation Control Knee Straps			
Knee cuff and strap system suitable for adjusting internal and external knee rotation.  <b>Only compatible with Standard Knee Support.</b>	Rotation Control Knee Straps Size 1	Rotation Control Knee Straps Size 2	
	5242-1786-054	5242-1787-054	
	Cuff Circumference - 38cm Max	Cuff Circumference - 45cm Max	

# Pelvic support options

Flip-away Lateral Support with Strap		Flexi Flip Away Lateral Support with Strap	
Firm lateral support pads with incorporated support strap. Flip away to aid transfers.		Flexible lateral supports with incorporated support strap. Contour to the body to give firm yet comfortable positioning. Flip away to aid transfers.	
5242-3371-054		5242-3372-054	
Support Pads: 9.5cm H x 12cm D		Support Pads: 11.5cm H x 18.5cm D	

# Trunk support options


Flip-away Lateral Support with Strap		Flexi Flip Away Lateral Support with Strap	
Firm lateral support pads with incorporated support strap. Flip away to aid transfers.		Flexible lateral supports with incorporated support strap. Contour to the body to give firm yet comfortable positioning. Flip away to aid transfers.	
5242-3371-054		5242-3372-054	
Support Pads: 9.5cm H x 12cm D		Support Pads: 11.5cm H x 18.5cm D	



Key Blue Prone and Supine Green Supine Only Yellow Prone Only

# Shoulder support options

Flat shoulder support		Shoulder support - Size 1		Shoulder support - Size 2	
A simple support pad for the shoulders.		Shoulder protractors mounted to a flat shoulder pad. Offers angle adjustment and promotes shoulder girdle stability.		Shoulder protractors mounted to a flat shoulder pad. Offers angle adjustment and promotes shoulder girdle stability. Required to achieve maximum user height.	
5242-2750-054		5242-2751-054		5242-2752-054	
31.5cm W x 9.5cm H		Back Pad: (22cm W x 9cm H) Protractor: (15.5cm W x 13cm H)		Back Pad: (22cm W x 19cm H) Protractor: (15cm W x 21.5cm H)	

# Head support options

Oval Head Support	
Simple headrest for children who require minimal head support. Comes mounted on an adjustable bracket.	
5356-4611-054	
19cm W x 10cm H	

Multigrip - 1 Link	Multigrip - 2 Link	Multigrip - 3 Link	
Single link wings for some degree of lateral support. 33cm W x 5cm D x 7.5cm H 5356-4601-000	2 Links in each wing for extra support and positioning. 47.5cm W x 5cm D x 12cm H 5356-4602-000 	3 adjustable links in each wing for ultimate lateral headrest control and comfort. 62cm W x 5cm D x 12cm H 5356-4603-000	
Wipeable Cover (Optional) 5356-4671-000	Wipeable Cover (Optional) 5356-4672-000	Wipeable Cover (Optional) 5356-4673-000	

# Optional Accessories

Pelvic Support Board		Pelvic Support Board Back Pad	
Offers a full contact surface to facilitate hip extension and neutral pelvic positioning.		Offers support to the child's upper back. May be used in combination with a head rest to limit unwanted hyper extension in prone. Only usable with pelvic support board.	
5242-1903-054		5242-1902-054	
Pad Size: 19.5cm W x 15cm H		Pad Size: 19.5cm W x 15cm H	

Key Blue Prone and Supine Green Supine Only Yellow Prone Only

# Optional Accessories (continued)

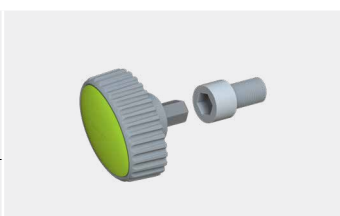
## Waistcoats

4 point detachable harness with zip. Used to provide additional trunk stability.	Size 2	Size 3
	5242-6252-000	5242-6253-000
	A: 5cm B: 32cm C: 14cm D: 15.5cm	A: 6.5cm B: 37cm C: 17.5cm D: 18cm



## Anti Tamper Conversion Kit

Allows for all wing knob adjustments to be converted to a tool fixing – ideal for environments where easy adjustment can be problematic.

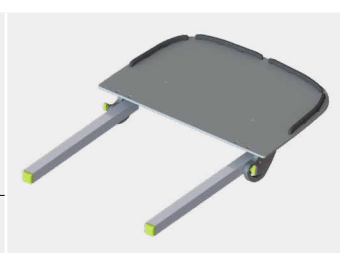


5240-0170-000

# Trays

## Multi-Position Tray

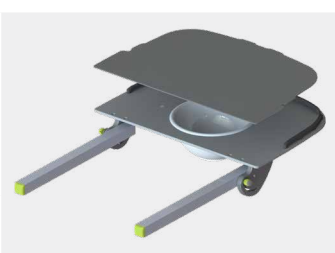
Can be used in both prone and supine. The tray is angle adjustable to ensure the correct position in either application.



5242-7110-054

## Multi-Position Tray with Bowl

Multi-position tray with included bowl which can be used for encouraging tactile play and hands to mid-line function. Comes with tray overlay when bowl use not required.



5242-7113-054

# Trays Accessories

## Tray Padded Wings

Recommended for use in supine and just as effective in prone. Padded extension wings for comfort and protection for the elbow.



5242-7116-000

15 cm W x 15cm L (3cm Padding)

## Full Tray Padding

Pads the entire tray surface to give a soft surface to prevent any discomfort caused by sudden uncontrolled arm and hand movement.



5242-7115-000

(3cm Padding)

## Tray Elbow Blocks

Aid in supporting the arms and promoting a functional arm and hand position – only usable in conjunction with Tray Extension Wings.

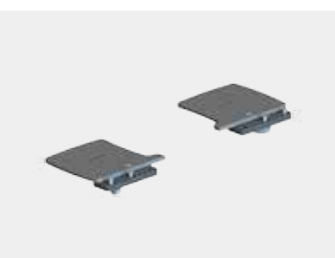


5356-7351-000

10cm W x 14cm H

## Tray Extension Wings

Recommended for use in supine and just as effective in prone. Extension wings offer a support surface for the child's elbows and prevents arms from slipping off the tray.



5242-7355-000

17cm W x 16cm L

# medifab

Distributed by Medifab Ltd

[solutions@medifab.com](mailto:solutions@medifab.com)

[medifab.com](http://medifab.com)



DISTRIBUTED BY:

Script: Jenx Standz Size 2\_20240311