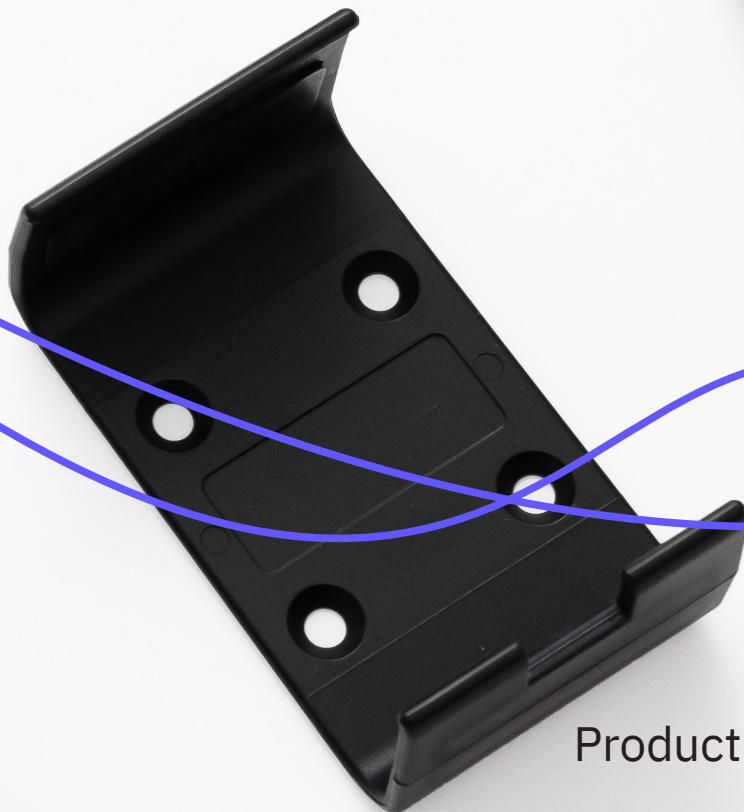


WheelAir



Product Catalogue

## Table of Contents

---

- 3 Manage skincare, temperature, and moisture buildup
- 4 WAcare and WAgO
- 6 WheelAir System
- 9 WA Slingback
- 10 WA Cushion Cover
- 11 Accessories
- 12 Warranty & Technical Information



## Manage skincare, temperature, and moisture buildup.

With years of product design experience, clinical partnerships, and input from wheelchair users, the WheelAir team understands how to tackle problems caused by heat, sweat, and moisture buildup. We've set out to design long-lasting and life changing products for wheelchair users.

WheelAir is the first temperature control system designed specifically for, and to fit all, wheelchairs. By dispersing air evenly across the seat surface using the patented channel technology, it helps avoid issues caused by relative humidity, overheating and (over)sweating while keeping skin dry and clean. The unique design lets you remain in control of skincare, temperature, and moisture build-up throughout the day.



# WAcare and WAgO

## WAcare

The field of seating and positioning often requires medical practitioners to find creative solutions to complex cases. The WAcare line provides a fully customisable solution in partnership with seating manufacturers. As a modular system, the clinician or technician can select the desired components and place the Fluid Flow™ channels wherever airflow temperature or humidity control is most needed.

With a WAcare integration as part of the seating system, the client regains full control of the internal and seat-surface temperature and humidity buildup, often replacing desk fans and towels. The enhanced thermal comfort assists in maintaining skin integrity by reducing the risk of heat and moisture associated skin damage.

## WAgO

Say goodbye to old fashioned methods of temperature and humidity control such as hand held fans, water sprays, ice packs, or avoiding any heat generating activities all together.

WAgO is a ready-to-use line of WheelAir products designed to provide powerful but discrete temperature and humidity control for wheelchair users struggling with heat, sweat, or skincare management. The WAgO products seamlessly integrate with all wheelchairs with removable cushions offering instant relief and optimal thermal comfort.

## Selection Tool

With a range of WheelAir products available, it is important to choose the right WheelAir package for you. At present, it is not possible to combine the WA Cushion Cover and Slingback during usage, however you can own both and switch between them depending on your current needs. We recommend using the selection tool below to decide which product best suits you.

Product Line	WAcare		WAgO	
Product	WA System		WA Cushion Cover	WA Slingback
Description	An integrated modular solution in partnership with our Recognised Partners available in all types of seating systems, such as power chairs and custom seating solutions.		A ready-to-go cover transforming any cushion into a microclimate cushion for optimal temperature and humidity control of the seat surface.	A ready-to-go back support for wheelchairs with velcro straps at the back offering full temperature control for the active user.
User Profile	Struggles with temperature regulation, sweat and/or humidity control		Prone to skin damage at the seat surface	Struggles with temperature regulation
Location	Seat, backrest, sleeping systems		Seat cushion	Backrest support
Channel positioning	Fully customisable		Underneath cushion	At seat surface
Wheelchair fit	All		All, requires breathable cushion	Wheelchairs with velcro straps
Temperature control	++++		+++	++++
Sweat control	++++		++	++++
Humidity control	++++		++++	++++
Airflow sensation	+++		++	++++
Customisation	++++		+	++
Quick installation	+		++++	++++





The WAcare parts become integrated components of the seating system, with only the Fanbox visible and removable. Due to the modularity there are really no limits as to how and where the products can be integrated.

With a WAcare integration as part of the seating system, the client regains full control of the internal and seat-surface temperature and humidity buildup. The optimal thermal comfort assists in maintaining skin integrity by

reducing the risk of heat and moisture associated skin damage.

The request for a client or WAcare integration can be made by the medical practitioner with one of our recognised partners, with whom we work closely together to integrate as desired. Please contact us or one of our recognised partners to discuss possibilities near you.

<b>Fanbox size</b>	26.5cm/10.5cm/3.9cm
<b>Battery</b>	3.7V 8000mAh Litium-Ion
<b>Battery Life</b>	27 hours (lowest setting)
<b>Charger</b>	18W USB-C
<b>Charge Time</b>	2 Hours to 80%
<b>Airflow</b>	9m/s - 28m/c output (m/s=meters per second)
<b>Fan Lifespan</b>	70,000 hours
<b>Safety</b>	Transit Approved and tested to IEC60601
<b>Certification</b>	CE Marked
<b>Aftercare</b>	Each Part can be Replaced Individually

<b>Product</b>	System
<b>User profile</b>	Struggles with temperature regulation, sweat and/or humidity control
<b>Location</b>	Seat, backrest, sleeping systems
<b>Temperature control</b>	++++
<b>Sweat control</b>	++++
<b>Humidity control</b>	++++
<b>Airflow sensation</b>	+++
<b>Customisation</b>	++++
<b>Quick installation</b>	+

# Integration Examples



The WheelAir system integrates into many different types of wheelchair seating. This page shows some of the different ways one can put the system together and put into seating.

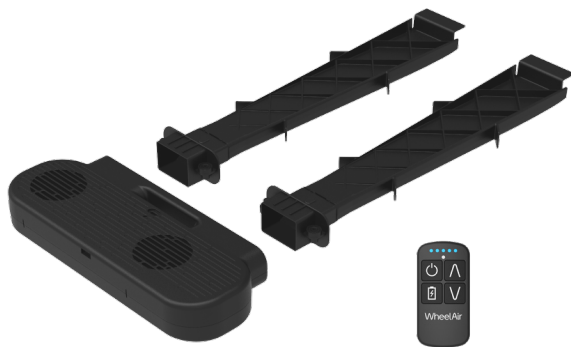
## WheelAir System Tube 180°



## WheelAir System Tube 90°



## WheelAir System Basic



## WheelAir System 90°



## WheelAir System Basic 90°



## WheelAir System 180°



Wigo



WheelAir

WheelAir



A seating system created to be your ultimate tool for temperature and sweat control.



Prevent an increase in temperature of 9°C and reduce relative humidity by 25%

Equipped with the WheelAir airflow system and FluidFlow™ channel technology to control and stimulate ventilation across the backrest, the WheelAir Slingback is designed to instantly improve posture and comfort.

Due to the Fluid Flow™ channel technology sitting in close proximity to the skin, the Slingback helps regulate body temperature and improve thermal comfort, giving back control over daily heat generating activities and internal heat build-up all while promoting comfort and healthy skin.

The WA SB can be used with all types of wheelchairs that have velcro straps at the back, whether it is a rigid, folding chair or a light powerchair. The product also works in conjunction with tapered or contoured backrests such as the

ILSA backrest. If you have a hard shell backrest please refer to our product partnerships to see whether we collaborate with your chosen brand.

Product	WA Slingback
User Profile	Struggles with temperature regulation
Location	Back support
Backrest Weight	1000g (smallest) 1300g (largest)
Fanbox Weight	560g
Temperature control	++++
Sweat control	++++
Humidity control	++++
Airflow sensation	++++
Customisation	++
Quick installation	++++

Available Sizes (WxL)	
CM	Inches
29 x 73 cm	11 x 29 inch
33 x 73 cm	13 x 29 inch
36 x 73 cm	14 x 29 inch
40 x 73 cm	16 x 29 inch
42 x 73 cm	16.5 x 29 inch
44 x 73 cm	17 x 29 inch
29 x 84 cm	11 x 33 inch
33 x 84 cm	13 x 33 inch
36 x 84 cm	14 x 33 inch
40 x 84 cm	16 x 33 inch
42 x 84 cm	16.5 x 33 inch
44 x 84 cm	17 x 33 inch

The microclimate, humidity and temperature control benefits of the WheelAir system with the pressure relieving, shear force qualities, and comfort of your existing seat cushion.



**Lower temperature by 6°C and reduce relative humidity by 41%\***

\*Test results vary depending on cushion type. Please visit our website for full results.

Removing the existing cushion cover and placing the cushion inside the WheelAir cover instantly promotes even airflow distribution throughout the cushion, lowering relative humidity and significantly decreasing the speed at which the temperature rises. Temperature and humidity control are two defining factors in maintaining skin integrity by reducing the risk of heat and moisture associated skin damage and reducing the effects of shear force.

The WA CC was tested with several cushion types, following the ISO 16840-11 Microclimate test. Naturally the more permeable the cushion, the better the results, but even with dense foam cushions the results were still astounding. We do want to note that with a non-permeable cushion or incontinence cover there will be little to no effect.

The WA CC can be used in every wheelchair with a removable cushion, given that there is an opening and space in the back for the Fanbox to hang. Please note that the WA CC comes with

a 25mm foam base, resulting in the cushion now also sitting 20-25mm higher. As a result, the wheelchair frame might need some adjustments to ensure proper fit for the user.

Product	WA Cushion Cover
<b>User Profile</b>	Prone to skin damage at the seat surface
<b>Location</b>	Seat cushion
<b>Channel positioning</b>	Underneath cushion
<b>Weights</b>	660g (smallest) 860g (larger)
<b>Fanbox</b>	560g
<b>Temperature control</b>	+++
<b>Sweat control</b>	++
<b>Humidity control</b>	++++
<b>Airflow sensation</b>	++
<b>Customisation</b>	++
<b>Quick installation</b>	++++

Available Sizes (DxWxH)	
CM	INCHES
40 x 40 x 06 cm	16 x 16 x 2.5 inch
45 x 40 x 06 cm	18 x 16 x 2.5 inch
45 x 45 x 06 cm	18 x 18 x 2.5 inch
40 x 45 x 06 cm	16 x 18 x 2.5 inch
45 x 50 x 06 cm	18 x 20 x 2.5 inch
50 x 50 x 06 cm	20 x 20 x 2.5 inch
40 x 40 x 10 cm	16 x 16 x 4 inch
45 x 40 x 10 cm	18 x 16 x 4 inch
45 x 45 x 10 cm	18 x 18 x 4 inch
40 x 45 x 10 cm	16 x 18 x 4 inch
45 x 50 x 10 cm	18 x 20 x 4 inch
50 x 50 x 10 cm	20 x 20 x 4 inch

### Cushion Types Tested with the WheelAir Cover

Cushion type	WA Cover Effectiveness –Temperature	WA Cover Effectiveness –Humidity
Mixed-density foam	++	+++
Lattice “honeycomb” structure	+++	++++
Compartmented air cell based	++	+++
Non-permeable air cell	+	+
Single density foam	+++	++++

## Lumbar Support

The WheelAir Lumbar Support allows for customisable seating solutions and positioning abilities. The lightweight cushion creates relief areas and can accommodate postural deformities where needed, while still allowing optimal airflow delivered through the Fluid Flow™ channels.

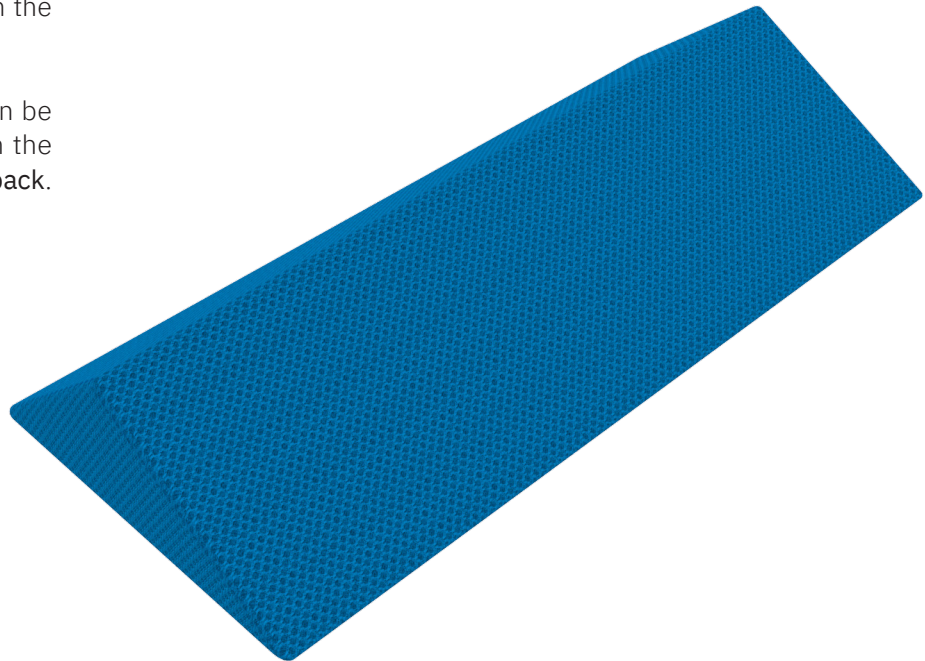
Features:

- Customisable postural support
- Optimal airflow
- Designed for WA Slingback
- Available in 6 sizes

The Lumbar Support cushion can be placed at any height in between the inner and outer cover of the Slingback.

### Sizes (w)

CM	INCHES
29	11
33	13
36	14
40	16
42	16.5
44	17



## Tension Adjustable Straps

The Tension Adjustable Straps are an easy-to-install support system to carry a canvas backrest or the WA Slingback, offering thoracic stability and customisable backrest positioning. A perfect alternative for the standard wheelchair strap system, it easily secures to the wheelchair canes, with anti slip fabric for extra security. The system adjusts to various back contours, with a customisable number of straps.

Features:

- Modular system
- One size fits all
- Max user weight: 140kg



# Warranty & Technical Information

How and where you purchase WheelAir products very much depends on which product line you want, based on your personal needs or requirements.

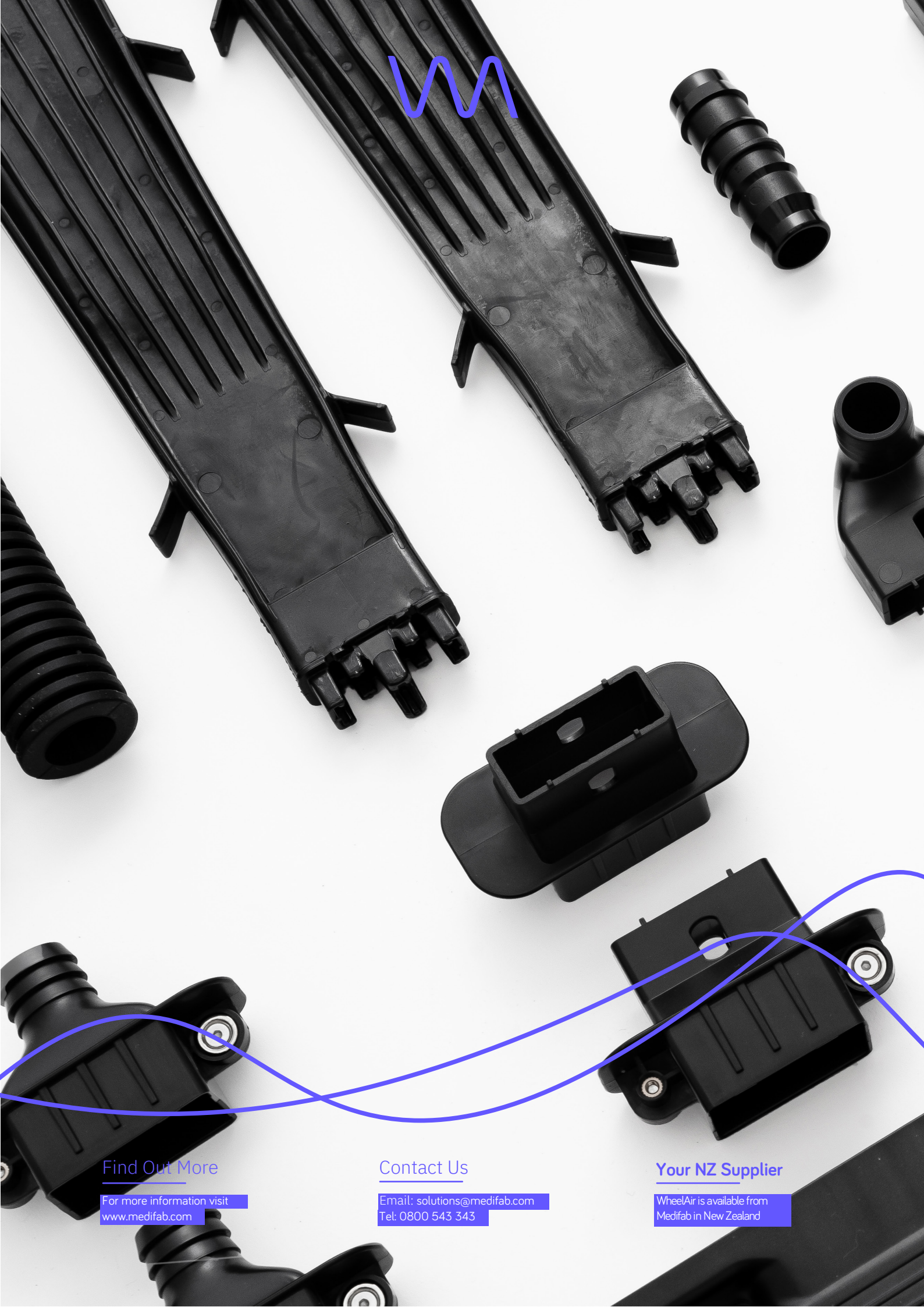
## Wcare

If you have a custom seating system on your wheelchair or other specific needs that require a WheelAir System fitted to your chair, then you are required to purchase the System through one of our manufacturing partners or your local wheelchair services. They will work with you and give necessary expert advice on finding the right fit. These systems are often reimbursed if there is a clinical need.

## Wago

Wago is our “off-the-shelf” product line, meaning they can be purchased directly from us or through one of our retail partners and be delivered to you to use right away. The Wago products seamlessly integrate with wheelchairs that have velcro straps at the back and removable cushions, meaning that you can fit them yourself without the need of expert help. We have created a variety of tools to help you justify the request for reimbursement. Please visit our website for more details.

<b>Slingback Sizes Weights</b>	Width ranging from 29cm to 44cm, length in 73cm or 84cm 1000g (smallest) 1300g (largest)
<b>Cushion Cover Sizes Weights</b>	Ranging from 40x40cm to 50x50cm in length and depth, and 6cm or 10cm in height 660g (smallest) 860g (largest)
<b>Tension Adjustable Straps</b>	One size fits all
<b>Lumbar Support Weight</b>	Width ranging from 29cm to 44cm 30g
<b>Fanbox Size Weight</b>	26.5cm/10.5cm/3.9cm 560g
<b>User Care</b>	Textile Covers Machine Washable (See Care Label)
<b>Battery Battery Life</b>	3.7V 8000mAh Lithium-Ion 27 hours (lowest setting)
<b>Charger Charge Time</b>	18W USB-C 2 Hours to 80%
<b>Airflow Fan Lifespan</b>	9m/s - 28m/s output (m/s=meters per second) 70,000 hours
<b>Safety</b>	Transit Approved and tested to IEC60601
<b>Certification</b>	CE Marked
<b>Aftercare</b>	Each Part can be Replaced Individually
<b>Warranty</b>	Two Year Warranty



Find Out More

For more information visit  
[www.medifab.com](http://www.medifab.com)

Contact Us

Email: [solutions@medifab.com](mailto:solutions@medifab.com)  
Tel: 0800 543 343

Your NZ Supplier

WheelAir is available from  
Medifab in New Zealand