

# Jenx Standz Size 2

Standz 2 offers Prone or Supine standing and easily accommodates either abducted or neutral leg positioning for children between the ages of 5-14.

## Supine/Prone/Upright/Abduction Standing Frame

Abduction settings are adjusted through a cleverly designed plunger system, locking the setting at the desired level and preventing movement



Tool free adjustments - cleverly designed wing knobs offer a comfortable grip to enable effective clamping with minimal effort

Can be configured to be tool adjustable only, limiting unwanted movement of supports.

Covers have been designed to wipe clean, they also contain an antimicrobial agent to aid infection control

Adjustable supports to accommodate knee flexion contractures and leg length discrepancies



### Base Frame Features

- 4 lockable swivel castors
- Tilt mechanism with dedicated release lever on handle with safety lock
- 0°-30° independent abduction movement of leg posts in 5 degree increments with easy to use locking plunger
- Individual footplates with angle adjustment for plantar and dorsiflexion
- Tilt range of 5°-90° with easy to read angle gauge
- Pelvic and trunk support boards and cover pads

The Standz 2 is able to be used in the Prone or Supine configuration, depending on your child's needs.

### Enhanced Upper Limb Positioning

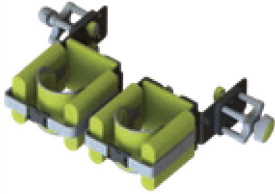
Supportive upper limb accessories ensure that the user is in the best position for function whilst standing, stabilising the shoulder and promoting midline function.



Code	Average Age	Weight Capacity	Hip Width	Hip Height	Chest Width	Chest Height	Max Height	Tilt Range (90° = Upright)	Frame Width	Frame Length	Height off surface when horizontal	Abduction Range
5242-0005-054	5-14yrs	70kg	25-37cm	50-95cm	22-36cm	82-116cm	160cm	0-90°	76cm	107cm	90cm	30°

# Accessories

**Standard Knee Support**  
5242-1750-054



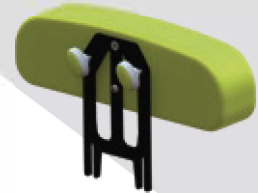
**Standard Knee Straps**  
Size 1 5242-1766-054  
Size 2 5242-1767-054



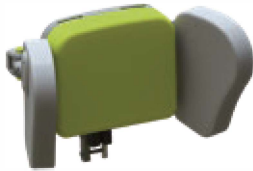
**Rotation Control Knee Straps**  
Size 1 5242-1786-054  
Size 2 5242-1787-054



**Flat Shoulder Support**  
5242-2750-054



**Shoulder Support**  
Size 1 5242-2751-054  
Size 2 5242-2752-054



**Flip-Away Lateral Support with Strap**  
5242-3371-054



**Flexi Flip Away Lateral Support with Strap**  
5242-3372-054



**Ankle Snugs**  
Size 1 5356-6121-000  
Size 2 5356-6122-000



**Sandals**  
Size 1 5356-6081-000  
Size 2 5356-6082-000  
Size 3 5356-6083-000

**Multi-Axis Knee Support**  
Size 1 5242-1770-054  
Size 2 5242-1771-054



**Knee Block**  
Size 1 5356-1751-000  
Size 2 5242-1767-054



**Knee Block Mounting Bracket**  
5240-1720-000

**Oval Head Support**  
5356-4611-054



**Flat Head Support**  
5240-4110-054



**Multigrip™ Head Support Link**  
1 Link 5356-4601-000  
2 Link 5356-4602-000  
3 Link 5356-4603-000



**Pelvic Support Board**  
5242-1903-054



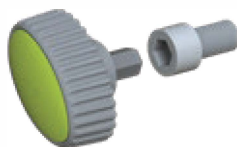
**Pelvic Support Board Back Pad**  
5242-1902-054



**Waistcoat**  
Size 2 5242-6252-000  
Size 3 5242-6253-000



**Anti Tamper Conversion Kit**  
5240-0170-000



**Multi-Position Tray**  
5242-7110-054



**Full Tray Padding**  
5242-7115-000



**Tray Mounting Bracket**  
5242-7009-054



**Multi-Position Tray with Bowl**  
5242-7113-054



**Tray Extension Wings**  
5242-7355-000



**Tray Padded Wings**  
5242-7116-000



**Tray Elbow Blocks**  
5356-7351-000



Standz 2 can be configured to be tool adjustable only, limiting unwanted movement of supports.