

Gravity Chair

Supportive and easy to use chair for time relaxing indoors whilst protecting posture and providing comfort. The Gravity Chair follows the principle of 'Tension and Relaxation' providing not only a comfortable seat, but an alternative and stable solution for users who otherwise might have spent time on the floor or sofa for relaxation. Gravity Chair provides a snug and 'safe' feeling for users who have a need for increased sensory feedback.

More than just a comfortable seat...



Centre of gravity is very low to offer a stable seating position

Deep Lateral Side Supports help to not only support the users posture, but also provide high levels of contact which some users find beneficial.

Very light, which enables it to be used almost anywhere!

Deep seating configuration **utilises gravity** to provide a stable and supportive environment

Simple Yet Customisable the gravity chair has a range of accessories for offering more support or making it more user friendly.

Standard configuration

- Removable and washable cover (choose either fully wipe-down -002X- or breathable inner section -001X-)
- Breathable seating insert (three liner colour options available; blue -066, green -055, red -022)
- Incontinence resistant sitting surface
- Standard head support
- Hip belt
- Velcro® attached side pouch
- Tilt wedge

Client group

- Users with limited ability to sit by themselves can be comfortably supported in the Gravity Chair.
- If users spasm, the Gravity Chair absorbs this force, allowing for some movement. After the spasm, the chair brings the user back into the original position.
- Users get close body contact in the Gravity Chair, great for proprioceptive feedback and self-awareness. The Gravity Chair can create an optimal solution for many occupational therapy requirements.
- The Gravity Chair is great for some users who may be mobile, but where mobility requires a lot of energy. The Gravity Chair can be used to support relaxation and comfort when needed as an alternative to less supportive options.



ACCESSORIES

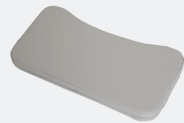
Mobile Base

- 3780-8701-000
- 3780-8702-000
- 3780-8703-000
- 3780-8704-000
- 3780-8705-000



Therapy Tray

- Small/Medium**
3770-7201-000
- Large/X-Large**
3770-7202-000
- XL-Wide**
3770-7203-000



Standard Lateral Head Support

- Small**
2010-4210-XXX
- Large**
2010-4211-XXX



Extended Lateral Head Support

- Small**
2010-4310-XXX
- Large**
2010-4311-XXX





Occipital Head Support

- 2010-4110-XXX

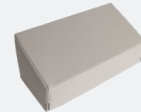


Fabric Options:

-  **Merino/Spacer**
-099
-  **Wipe Down**
-209

Foot Support

- Small/Medium**
3770-1031-000
- Large/XL/XL-Wide**
3770-1032-000



Abductor Pommel

- Small/Medium**
3770-1021-000
- Large/XL/XL-Wide**
3770-1022-000



Side Filler Pads

- 3770-1011-000
- 3770-1012-000
- 3770-1013-000
- 3770-1014-000



Depth Adj Liner

- 3770-0321-000
- 3770-0322-000
- 3770-0323-000
- 3770-0324-000
- 3770-0325-000



Size	Code	User Height	Seat Depth	Seat Width At Back	Seat Width At Front	Back Height	Chair Total Width	Chair Total Height	Chair Total Depth
Sml (1)	3770-00X1-XXX	90-110 cm	24 cm	21 cm	28 cm	60 cm	46 cm	55 cm	60 cm
Med (2)	3770-00X2-XXX	110-130 cm	30 cm	23 cm	30 cm	69 cm	49 cm	61 cm	71 cm
Lrg (3)	3770-00X3-XXX	130-150 cm	38 cm	27 cm	37 cm	74 cm	57 cm	67 cm	82 cm
XLrg (4)	3770-00X4-XXX	150-170 cm	43 cm	30 cm	39 cm	81 cm	60 cm	71 cm	91 cm
XL-Wide (5)	3770-00X5-XXX		41 cm	50 cm	71 cm		72 cm		