

# Sharky



## SPECIALISED TILT-IN-SPACE COMMUNE

Distributed by  
**medifab**

AUSTRALIAN  
SCRIPTING AND ORDERING GUIDE

# Client Details

Client/User Name:	
Date:	
DOB:	

## Get it Faster

9999-ASMB-002

### Medifab Assembly Service for Easy Delivery

Medifab offers our popular assembly service on this product, meaning the product arrives ready to be delivered, straight from the box, saving time and speeding up the delivery process.

# Product Details

Options Available	Size 1	Size 2
<b>35cm Back Support Height</b>	6081-0010-100	N / A
<b>45cm Back Support Height</b>	6081-0010-000	6082-0015-100
<b>55cm Back Support Height</b>	N / A	6082-0015-000
Seat Width (cm)	24, 27, 30	29, 32, 35
Seat Depth (cm)	27 - 36	27 - 40
Maximum Traversable Toilet Height (cm)	52	
Tilt Adjustment Angle (°)	-10 to +45	
Back Support Recline Angle (°)	72 - 120	
Leg Elevation Angle (°)	78 - 138	
Foot Support Angle (°)	80 - 100	
Arm Support Height (cm)	14.5 - 20.5	
Wheel Diameter (mm)	75	
Load Capacity (kg)	60	
Length (cm)	70	
Width (cm)	56	



Sharky Size 1



Sharky Size 2

# Upgrade Kit to Sharky Size 2

Upgrade Sharky mobility base from size 1 to size 2 using this kit.

6085-8081-086



# Mobility Base (required)

(Sizes are specific for each size Sharky)

Sharky mobility base with height adjustable compact folding base, -10 to 45° tilt in space and goes over toilet heights from 42 - 53cm.

**For Sharky Size 1**  
6081-0015-000

**For Sharky Size 2**  
6082-0010-000



# Head Support

Suitable for use on either size Sharky

Sharky headrest, multi adjustable.  
6085-4750-000



# Lateral Supports

Both sizes suitable for use on either size Sharky

Sharky Lateral Pads.  
11 x 6cm  
6085-3310-000

Sharky Lateral Pads.  
14 x 8cm  
6085-3320-000



# Hip Support (required)

Options for Size 1 Sharky

**24cm**

Sharky seat width reducing hip supports for seat width of 24cm.  
6085-1110-000



**27cm**

Sharky seat width reducing hip supports for seat width of 27cm.  
6085-1120-000



**30cm**

Sharky seat width reducing hip supports for seat width of 30cm.  
6085-1130-000



Options for Size 2 Sharky

**29cm**

Sharky seat width reducing hip supports for seat width of 29cm.  
6085-1210-000



**32cm**

Sharky seat width reducing hip supports for seat width of 32cm.  
6085-1220-000



**35cm**

Sharky seat width reducing hip supports for seat width of 35cm.  
6085-1230-000






# Seat Options

Seat Infill Pad		Armrests	
Sharky removable seat infill pad for hygiene opening 6085-0401-000		Sharky removable and height adjustable armrests 6085-5500-000	
Medial Thigh Support (Both sizes suitable for use on either size Sharky)			
<b>Size 1</b> 8cm wide x 12cm deep 6085-1500-000	<b>Size 2</b> 10cm wide x 14cm deep 6085-1520-000		
Splash Guard		Commode Pan	
Sharky removable splash guard 6085-7675-000		Sharky removable commode pan with retainer 6085-8210-000	

# Belt Options (recommended)

Pelvi-Loc (for use on either size Sharky)		Standard Hip Belt (for use on either size Sharky)	
Pelvi-Loc 3D for maximum pelvic security		Sharky hip belt with neoprene pads	
<b>X-Small</b> 1430-6340-024		<b>Size 1</b> Pad Width 12.5cm 6085-1910-000	
<b>Small</b> 1430-6341-024		<b>Size 2</b> Pad Width 16.5cm 6085-1920-000	

# Foot Positioning

Foot Support System			
Sharky removable foot support system (These options are specific for each size Sharky).	<b>Size 1</b> For Size 1 Sharky 6085-1810-000	<b>Size 2</b> For Size 2 Sharky 6085-1820-000	
Calf Strap		Ankle Huggers (for use on either size Sharky)	
<b>For Size 1 Sharky</b> 6085-6160-000		Sharky neoprene ankle huggers	
<b>For Size 2 Sharky</b> 6085-6260-000		<b>Size 1</b> 6085-6101-000	
		<b>Size 2</b> 6085-6102-000	

# Harnesses

## Shoulder Harness (for use on either size Sharky)

Sharky neoprene shoulder harness.

### Size 1

24.5cm high x 19cm wide  
6085-6610-000

### Size 2

31.5cm high x 21.5cm wide  
6085-6620-000



# Handles

## Sharky Push Handles

6085-8600-000



# Accessories

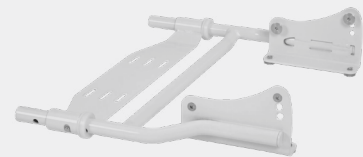
## Toilet Adapter

### Size 1

(for size 1 Sharky)  
6085-0600-000

### Size 2

(for size 2 Sharky)  
6085-0620-000



## Bath Subframe

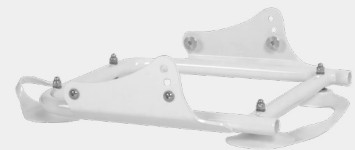
Sharky bath subframe with seat angle adjustment. Minimum width of bath: 36cm

### Size 1

(for size 1 Sharky)  
6085-0500-000

### Size 2

(for size 2 Sharky)  
6085-0520-000



## Tray Table

Sharky depth adjustable, removable tray table.  
Note: Arm Supports required for use with Tray Table

### Size 1

(for size 1 Sharky)  
6085-7100-000

### Size 2

(for size 2 Sharky)  
6085-7200-000



# medifab

Distributed by Medifab Ltd

[solutions@medifab.com](mailto:solutions@medifab.com)

[medifab.com](http://medifab.com)



**SHARKY**

DISTRIBUTED BY:

Script: Sharky\_20241031\_AU