

# spex

Shaping Better Lives



STANDING  
POWERCHAIR  
ADAPTER  
MOUNT

The Spex Standing Powerchair Adapter Mount provides an off-the-shelf hardware solution for mounting Spex back supports to the Levo C<sup>3</sup> Powered Standing Wheelchair.

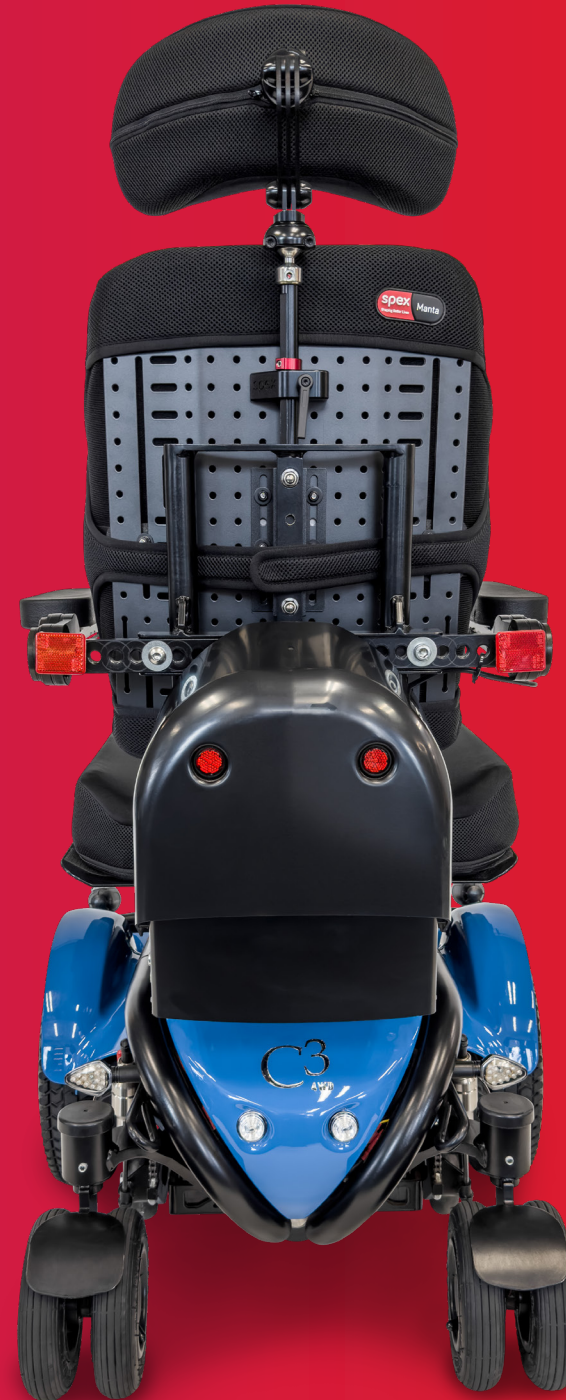


The Standing Powerchair Adapter Mount provides an off-the-shelf hardware solution for mounting Spex back supports to the Levo C<sup>3</sup> powered standing wheelchair.

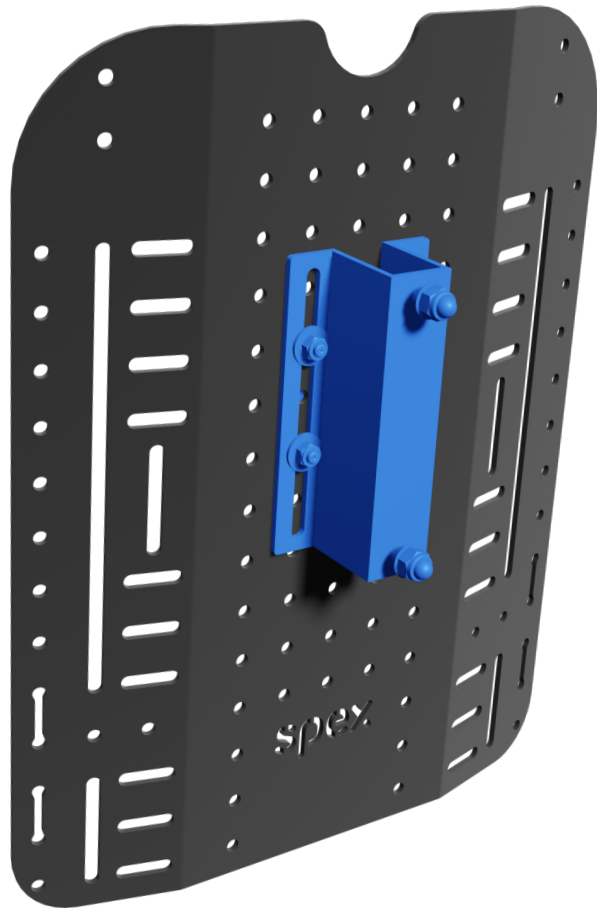
This versatile Adapter Mount empowers clinicians and power wheelchair users by providing an opportunity to select from the Spex seating range to suit individual needs.

Featuring a reduced depth profile and built-in height adjustment, this Adapter Mount maintains back support functionality, while providing a compatible solution for attaching to the Levo C<sup>3</sup> Powered Standing Wheelchair.

Spex has also developed an alternative mounting system for use with selected models of Power Wheelchair systems such as the Quantum TRU-Balance 3 and Sedeo Pro. Regular back support mounting options are also available where power wheelchairs are fitted with back support canes to enable mounting.



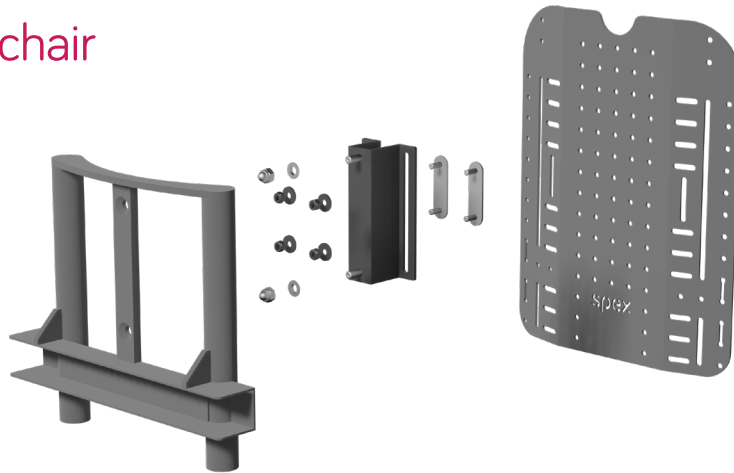
Compatible with  
Levo C<sup>3</sup>



# Specifications

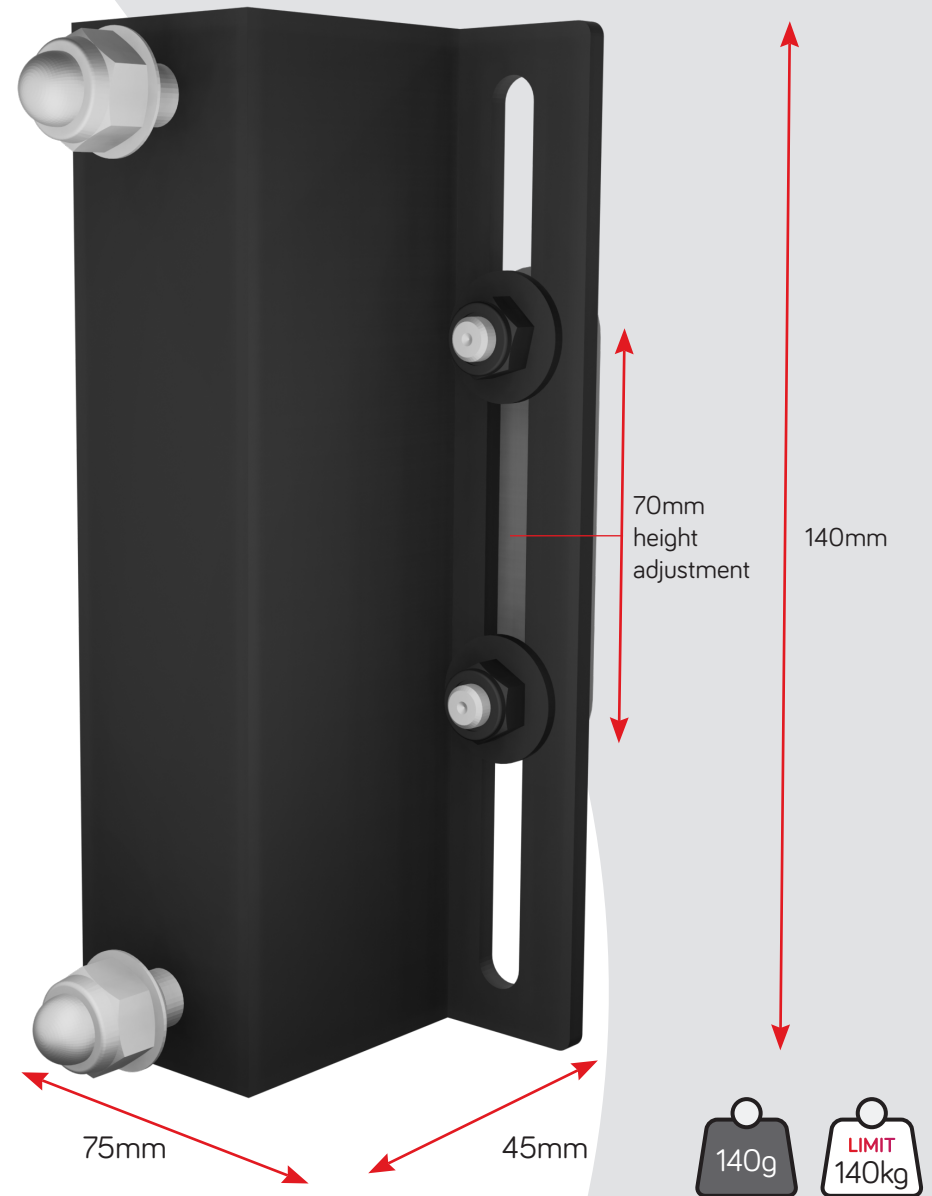
## Standing Powerchair Adapter Mount

Code: 1259-2610-200



## Transit Safety

The Spex Seating System complies with transit safety standards, which evaluate the crash test performance of the seating system independent of a specific model of wheelchair base. The Standing Powerchair Adapter Mount has not been crash tested with a specific wheelchair base. Mounting the Spex Seating System to an appropriate wheelchair base using the Standing Powerchair Adapter Mount, may require a qualified professional to configure and install the seating system.

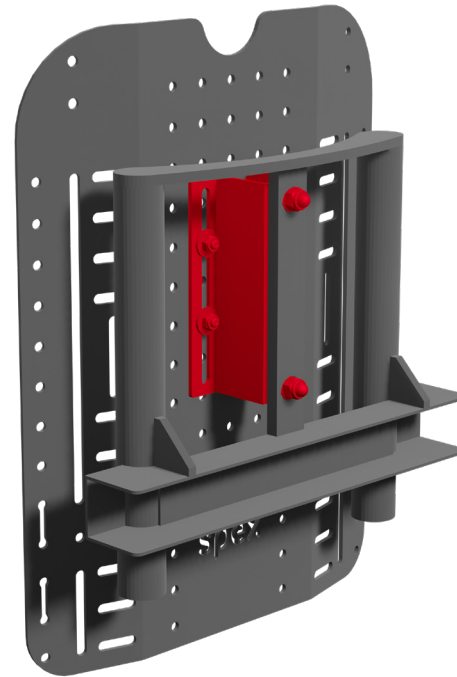


# Features & Benefits



## Low Depth Profile integrates with Anti-Shear function

The slim depth profile of this Adapter Mount has been designed to work with the Levo C<sup>3</sup> low shear position adjustment system. This low-depth profile also has the added benefit of minimising seat depth loss, and requires minimal installation space.



## Positioning Freedom with Height Adjustment

Back supports can be attached to the Adapter Mount at a range of different heights. For fine-tuning adjustments to the back support position, a further 70mm of continuous height adjustment is available with the Adapter Mount.



## Compatibility with Spex Postural Support Accessories

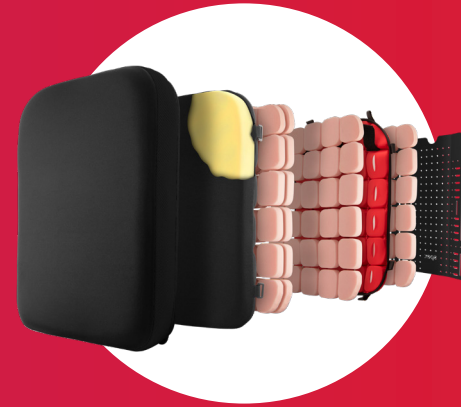
The Spex Adapter Mount has been designed for compatibility with the standard range of Spex postural support accessories, including head supports and lateral supports. Some smaller back support sizes affect compatibility. See Compatibility Guide for further details.

# Compatibility with a wide range of Spex Back Supports

The Adapter Mount can be used with a variety of Spex Back Support options, including



Spex Classic



Spex SuperShape



Spex Vigour



Spex Manta



Zygo Mid  
Active Contour



Zygo Mid  
Deep Contour



# spex

Manufactured by Spex Ltd

32 Detroit Drive  
Rolleston 7675  
New Zealand

+64 3 307 9790

[solutions@spexseating.com](mailto:solutions@spexseating.com)

[www.spexseating.com](http://www.spexseating.com)

DISTRIBUTED BY: