

Sharky Base Size 1 to Size 2 Conversion Manual



You will need the following tools
and parts for this procedure:

- **1x** Scantling Unit Sharky size 2
6085-8081-086
- **1x** Sharky shower and toilet seat unit, size 2
6082-0015-000

Removing the Seat Unit



Step 1:

Start by removing the seat unit from your size 1 Sharky, release the seat unit by pressing down the red levers at the front on each side. Tilt the seat unit back and lift to remove. Place to one side.

Removing the Tilting Unit



Step 2:

With the seat tilt mechanism handle closest to you, remove the screws holding the scantling plate from each side.



Then remove the scantling plates and place them aside.



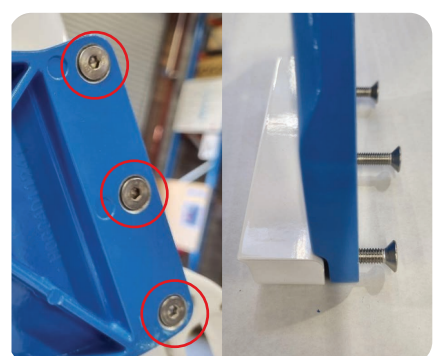
Step 3:

Now you need to remove the main bolt from each side of the tilting unit using a 4mm hex/allen key and a 10mm open ended spanner. Loosen and remove both bolts, nuts and washers completely from the frame.



Step 4:

With the bolts completely removed, you will now be able to spread the main frame and pop the tilting unit off each side mount. To remove it completely from the frame you will need to pull up on the pin release cable to release the pins and lift the complete assembly off the frame.



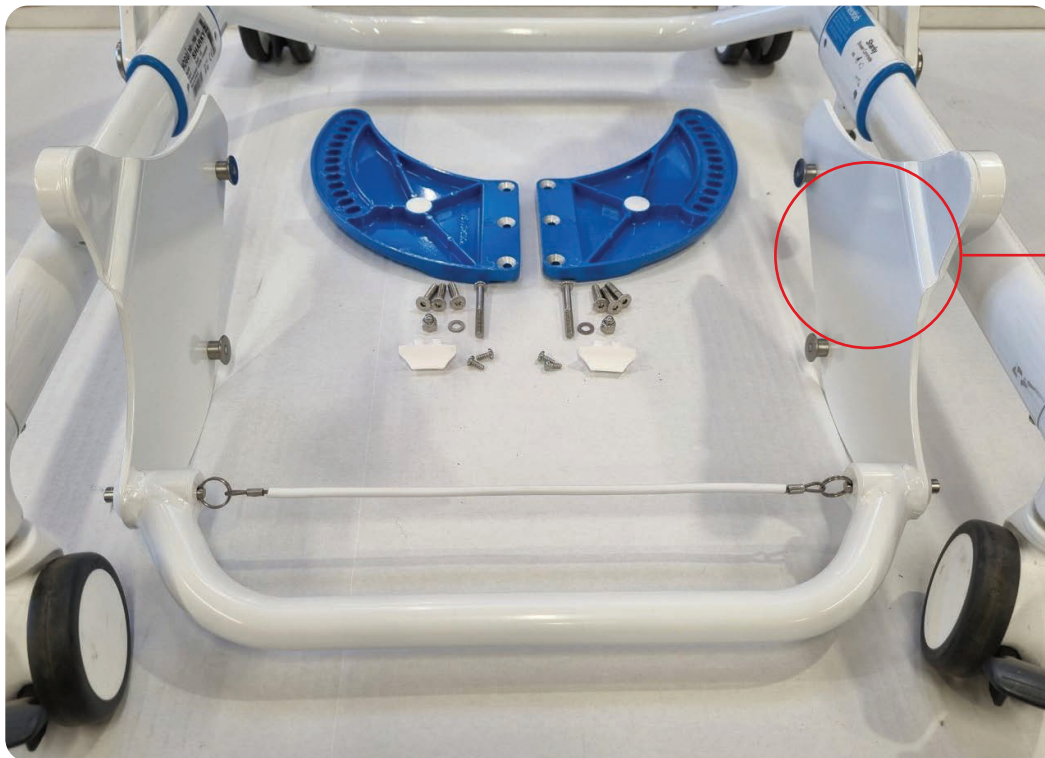
Step 5:

This now leaves you with the blue scantling plates visible on each side. Remove the 3x M6 bolts holding the plate and spacer block on each side.



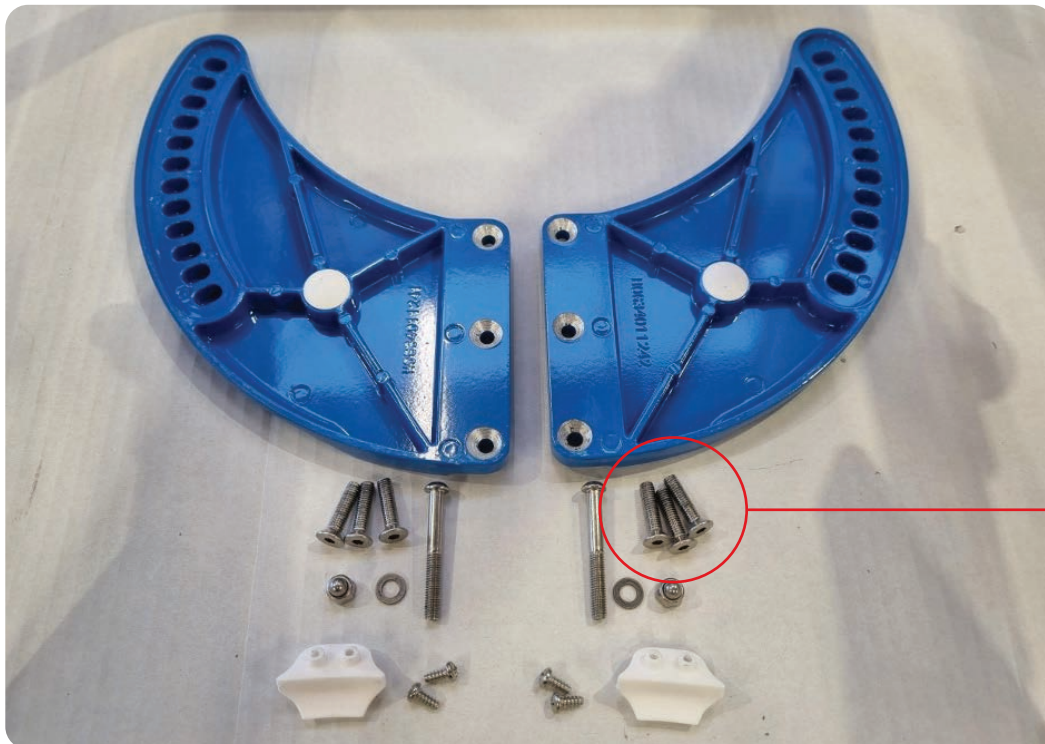
These are the spacers and long M6 bolts that will NOT be used to reassemble/convert to the size 2 unit. Place these aside.

Identifying the required parts



Size 2 Tilt Mechanism

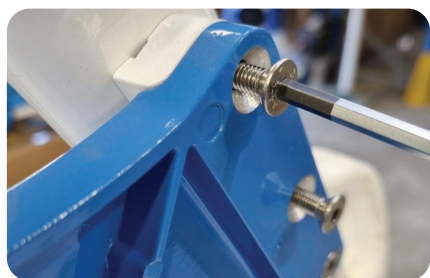
The above image shows the original parts needed to refit to the size 1 Sharky base to convert it to a size 2, along with the new size 2 tilt mechanism and the 6x M6 x 28mm bolts.



M6 x 28mm Bolts

These are the parts to reassemble before fitting the size 2 tilt mechanism.

Fitting the Scantling Plates



Step 6:

Place the M6 x 28mm bolts in the scantling plates and start each bolt thread in the main base frame.



Step 7:

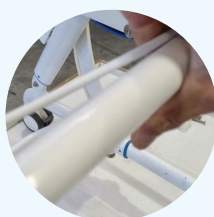
Then tighten all 6x bolts to hold the scantling plates in place.

Fitting the Size 2 Tilt Mechanism



Step 8:

While holding the new size 2 tilt mechanism, place it between both mount points and spread the frame to position the mounts and tilt mechanism together.



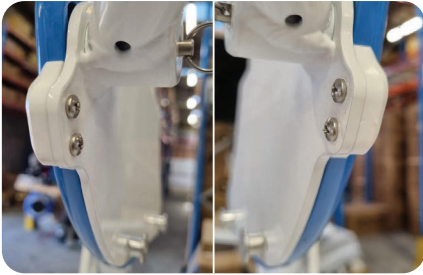
You will find it helps to pull the cable to release the pins in the tilt mechanism.



Step 9:

Now fit the original long bolts, washers, and nuts to the tilt mechanism to secure this to the main frame. Tighten the bolts and nuts to be firm, and not over tight which may impede the tilting mechanism.





Step 10:

Fit the tilt guide plates and screws to each side of the tilt mechanism.

*Check the tilting mechanism slides smoothly and the locking pins engage in every position.
If the guide plates bind you need to add a washer between the plate and the frame.*



This completes the procedure, and you can now fit the size 2 seat unit to the base frame.

medifab

32 Detroit Drive
Rolleston 7675
New Zealand

0800 543 343 (NZ)

solutions@medifab.com

medifab.co.nz



DISTRIBUTED BY:

Guide: Sharky_20230821