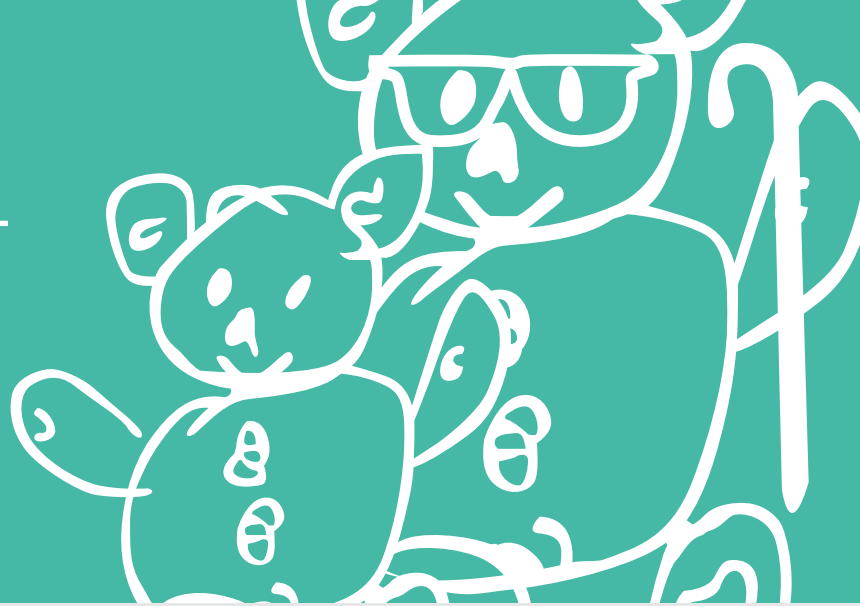


Fitted Cotton Sheet

INSTRUCTIONS FOR USE



MANUFACTURED BY SIMPLE STUFF WORKS ASSOCIATES



PLEASE NOTE

It is unsafe to assemble and use the equipment without **fully reading** the instructions

1. User Assistance

If you are experiencing problems with any part of your sleep system, refer to troubleshooting section and the online video.

If you cannot find the answer contact us:

UK Telephone number : **01827 307870**

USA Telephone number : **1-888-213-8416**

Support Email : **admin@simplestuffworks.co.uk**

Simple Stuff Works

UK

Simple Stuff Works Associates Ltd
Units 4 and 5, Cavendish
Tamworth
Staffs
B79 7XH

USA

Simple Stuff Works Inc.
One Commerce Centre,
1201 Orange St #600,
Wilmington,
New Castle,
Zip Code 19899
USA

Product Info

The product in this specific manual is the **Fitted Cotton Sheet** as part of **Mattress Flotation Therapy**

Product code : **IKY**

Device listing number : **D258510**

Proprietary Name : **Non-powered Sleep System**

Regulation Description : **Non-powered flotation therapy mattress**

Other Useful Contacts

Please fill in accordingly:

Home medical equipment supplier :

Home healthcare agency :

Doctor :

2. Table of Contents

1. User Assistance	1
2. Table of Contents	2
3. Warnings and Cautions	3
4. Purpose of the Device	5
5. Description of the device	6
6. Environmental conditions that affect use	6
7. Set up instructions of the device	7
8. Check out procedures	8
9. Operating instructions of the device	9
10. Cleaning instructions	11
11. Maintenance instructions	12
12. Storage of the device	12
13. Troubleshooting section	12
14. Summary page	14
15. Index	15
16. Date of writing the manual	15
17. Accessories	16

3. Warnings and Cautions

A warning is a statement that alerts users to the possibility of injury, death or other serious adverse reactions.

! WARNING

The cotton sheet is not to be eaten or placed in any orifice

1. This could result in harm to the individual.
2. The Mesh Sheets should never be directly in contact with the patient's body, the sheets should always be covered by the Cotton Sheet.
3. If this is considered a risk then an alternative is to be sought from the registered health professional.

! WARNING

The Cotton Sheets and Mesh Base System should not be exposed to heat for example a naked flame.

1. This could result in burns to the individual and damage to the product.
2. Establish and remove the source of the heat.
3. If this is considered a risk then an alternative is to be sought from the registered health professional.

A caution is a statement that alerts users about the possibility of a problem associated with use.

! CAUTION

Only use Simple Stuff Works components and accessories

1. Any unauthorized use of the system may put the patient and the care giver at risk.
2. Failure to follow these instructions will invalidate the warranty.

Warnings and Cautions

A caution is a statement that alerts users about the possibility of a problem associated with use.

! CAUTION

The Mattress, Cotton and Mesh Sheets should be free of objects and creases.

1. Any objects trapped between, underneath, or on top of the cotton or mesh sheets will be a potential risk for pressure ulcer development.
2. Any creases in the sheets will be a potential risk for pressure ulcer development.
3. The user to smooth the sheets to check for unwanted objects and creases.

! CAUTION

The equipment poses an infection control risk if used between patients.

1. Ensure the correct local infection control measures are taken if redistributing to other patients.

! CAUTION

Cleaning care and maintenance instructions should be followed at all times

1. Not following the instructions will result in damage to the sheet, placing the patient at risk.
2. Fully read the accompanying cleaning and care document.
3. Do not use the sheet if damage does occur and consult your registered health professional.

! CAUTION

In hot environmental temperatures pooling of body moisture can occur on the mattress base as moisture is wicked away from the body.

1. An absorbent material such as an incontinence sheet should be placed under the sheets to absorb the excess moisture.
2. The care giver should continue to monitor the condition of the skin.

! CAUTION

The equipment should only be used for the patient it was ordered for and for its intended use.

1. This could result in pain and deformity to the unintended patient.
2. Do not give any unused systems, or part of, to another patient, a risk assessment by a registered health professional will be required to determine the suitability of any equipment.

4. Purpose of the Device

- The Fitted Cotton Sheets can be used on different types of mattresses such as a foam and an airflow and low air loss mattress. If in any doubt consult with the manufacturers guidelines.
- The Cotton Sheet is the sheet that will be placed between the patient and either the mattress or any additional layers.
- Four way stretch, the sheet 'moulds' over the sleep system parts that are placed below it. In this way the contours of the parts are not lost ensuring good support and optimising contact with the person's body.
- Thermoregulation, the Cotton Sheet is made from a cotton mix, it is a natural fibre, that wicks moisture away from the body. Thermo-neutral (neither giving heat to the person's body nor taking heat from the person's body). Necessary where thermoregulation and/or sweating is a problem for the person.
- The intended purpose of the sleep system is therapeutic positioning in the lying posture, it is a gentle therapy used by people with movement difficulties. When used correctly it may help protect and restore an individual's body shape.
- The Simple Stuff Works positioning system has no Velcro or screw action fixings. So, silent changes of position can be made with little disruption to the person whilst in bed.
- The positioning and use of any accessories should be determined by an appropriately qualified and registered professional.

5. Description of the device

This is the Fitted Cotton Sheet it is made from a cotton mix. With a foam mattress it is placed over the mesh base system and the topper. With a low air loss or airflow mattress it is placed directly onto the mattress. The fitted cotton sheet helps to secure any supports into position whilst moulding to the patient's body.

See figure 1.



Figure 1

6. Environmental conditions that affect use

- The properties of the system naturally wicks moisture away from the body. This may result in moisture pooling on the mattress underneath the base layers.
- In hot environmental conditions use an incontinence sheet underneath the base layers, this will absorb any moisture that is wicked away from the body.
- After moving the patient, check for objects or creases.
- Remove any objects and smooth creases from the fitted sheet and base layers.
- To transport the equipment place all parts into a bag to ensure all the parts stay together.
- After unpacking check all parts are present and intact.

Conditions under which the device should and should not be used

- The Fitted Cotton Sheet can be used in conjunction with a variety of mattresses. If in any doubt consult the mattress manufacturers guidelines.
- The Fitted Cotton Sheet can be used in conjunction with a mesh based system and foam mattress.

7. Set up instructions of the device

List of parts

1. Appropriate mesh base system
2. Appropriate support as assessed by the qualified and registered health professional
3. Fitted Cotton Sheet

No tools required for set up

Device placement

1. The Fitted Cotton Sheet can be placed over the mesh base system and topper on a foam mattress.
2. The Fitted Cotton Sheet can be placed directly on the airflow or low air loss mattress if deemed appropriate by the registered and qualified healthcare professional.
3. The care giver to ensure that there are no creases or objects, on top of, below or in-between the cotton and mesh sheets.

! CAUTION

The Mattress, Cotton and Mesh sheets should be free of objects and creases.

1. Any objects trapped between, underneath, or on top of the sheets will be a potential risk for pressure ulcer development.
2. Any creases in the sheets will be a potential risk for pressure ulcer development.
3. The user to smooth the sheets to check for unwanted objects and creases.

4. The system is designed to be removed for cleaning and then replaced.

For assistance with set up issues refer to the corresponding video and to page 1 for our contact details.

8. Check out procedures

- Ensure the Fitted Cotton Sheet is intact and contact your supplier for a replacement and advice if required.
- Prior to each use visually check and ensure the sheets are free from objects and creases.
- Smooth out any creases and remove objects from the sheets.

For assistance with set up issues refer to the corresponding video and to page 1 for our contact details.

9. Operating instructions of the device

! CAUTION

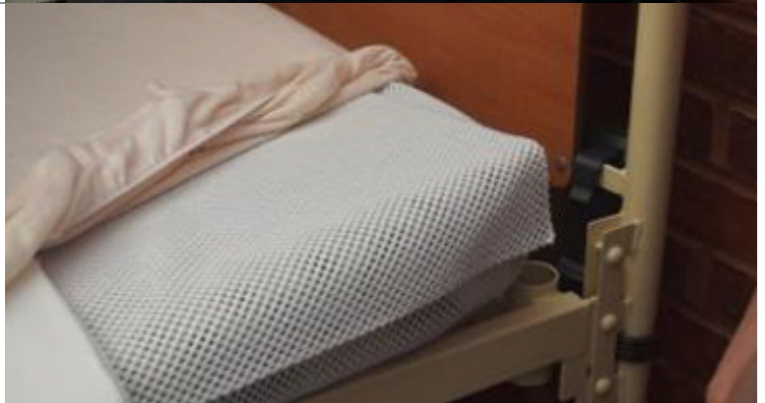
The Mattress, Cotton and Mesh sheets should be free of objects and creases.

1. Any objects trapped between, underneath, or on top of the sheets will be a potential risk for pressure ulcer development.
2. Any creases in the sheets will be a potential risk for pressure ulcer development.
3. The user to smooth the sheets to check for unwanted objects and creases.

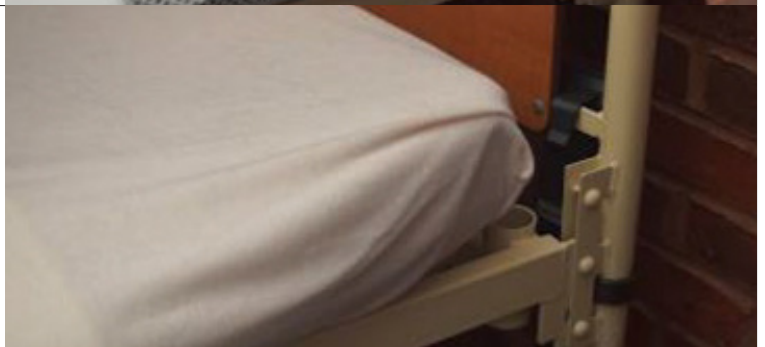
1. Fit the Cotton Sheet to the mattress either over the mesh base system of the foam mattress. Or fit directly onto the airflow or low air loss mattress if deemed appropriate by the registered and qualified healthcare professional.



2. The Fitted Cotton Sheet should be pulled over all four corners of mattress.



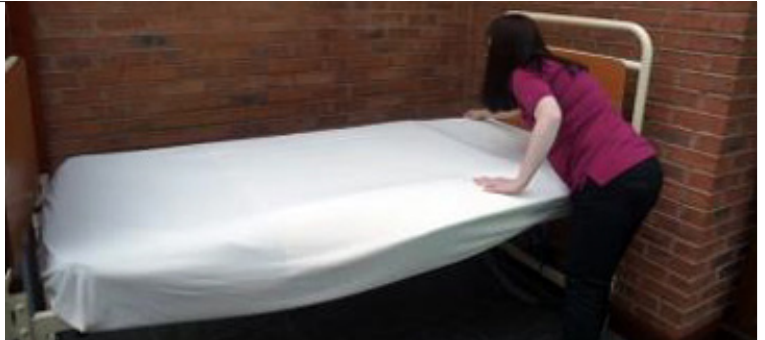
3. The Fitted Sheet loosely fits a mattress.



Fitted Cotton Sheet

INSTRUCTIONS FOR USE

4. Smooth out the Fitted Cotton Sheet ensuring there are no creases or objects present.



5. In this instance the Fitted Cotton Sheet is lifted up with the top mesh layer and the mattress topper. This demonstrates where the appropriate support is positioned.



6. It is between the two mesh base layers that the appropriate support would be placed. The exact type and positioning of the support should always be determined by the appropriately qualified and registered health professional.



7. The support is positioned between the mesh sheets.



8. To secure the support into position tuck the Fitted Cotton Sheet under the mattress.








It is advised the care giver seeks training and guidance in the field of manual handling. This is not covered within this guide.

10. Cleaning instructions

The cotton fitted sheet is a fully washable product.

- How often should the Fitted Cotton Sheet be washed- On soiling and enough to keep clean and fresh.
- Only **NON bleaching** household washing powder can be used to wash the fitted cotton sheet.
- The Fitted Cotton Sheet should not be washed above forty degrees Celsius, **<40C**.
- The Fitted Cotton Sheet should fit into a standard house hold washing machine drum and should be spun on a **slow spin cycle**, 800 revs or less.
- The Fitted Cotton Sheet can be air dried or tumble dried on a low heat.

1. Washing the system whole. Adhere to the manufacturer's instructions at all times.	PRODUCT	SYMBOLS
	Fitted Cotton Sheet	   
	WHAT DO THEY MEAN?	TEMPERATURE
	<ul style="list-style-type: none"> • Wash at maximum 40 degrees • <u>The line underneath 40° indicates a slower spin cycle is required</u> • Do not bleach • Do not iron • Tumble dry on low heat 	<p>40°C Maximum</p>
2. Insert the Fitted Cotton Sheet directly into the washing machine. Add non bleaching washing powder and set the washing machine as per instructions.		
3. Remove from the washing machine, allow the product to air dry or tumble dry on a low heat.		

11. Maintenance instructions

- Check that the seams are intact - before use visually inspect.
- Check that the integrity of the cotton sheet has not been comprised.
- Check before every use that there are no objects that are within the cotton sheet, between, on top of or underneath the base system.
- If pooling of moisture occurs ensure that an incontinence pad is placed on the base of the mattress to absorb excess moisture.

12. Storage of the device

1. The system will deteriorate if stored in wet or damp conditions.
2. It should be stored in a room above freezing but below 90 degrees Fahrenheit. For extended storage then you need to store in plastic, sealed containers.

13. Troubleshooting section

The healthcare professional emergency assistance service should be contacted immediately if the troubleshooting reveals a patient health problem rather than a device problem.

Any adverse events should be reported using the contact information on page 1

Anticipated problems	Solution to the problem
1. During very hot environmental conditions there may be pools of sweat found on the mattress. This is due to the fabric wicking moisture away from the body.	1. Place an incontinence sheet underneath the fitted base sheet. This will collect excessive moisture. Monitor the patient's skin condition when using this.

Fitted Cotton Sheet

INSTRUCTIONS FOR USE

<p>2. The development of a pressure point, due to a crease in the material.</p>	<p>2. Ensure that the mesh based sheets, topper and cotton sheet are free from creases.</p>
<p>3. The development of a pressure point, due to an object under, between or on top of the layers.</p>	<p>3. Ensure that the mesh based sheets, topper and cotton sheet are free from objects.</p>
<p>4. If the material gets damaged due to washing at temperature exceeding 40 degrees C.</p>	<p>4. Comply with the washing, drying and care of instructions of the cotton sheet. Contact your supplier for a replacement see page 1.</p>
<p>5. If the material gets damaged or torn.</p>	<p>5. Comply with the cotton sheet washing, drying and care of the cotton sheet instructions. Contact your supplier for a replacement see page 1.</p>
<p>6. The cotton sheet is no longer soft, appears to have lost its flexibility and stretch properties.</p>	<p>6. Ensure the cotton sheet is not exposed to excessive heat when washing and drying. Do not iron or bleach. Read the care of instructions fully.</p>

14. Summary page

This is not to replace the complete user's instructions and the entire manual should be read prior to using the device.

- The Fitted Cotton Sheet is the sheet that will be placed between the patient and either the mattress or any additional layers.
- The patient lies directly on the sheet, it can be used on a foam, low air loss and airflow mattress when assessed by an appropriately qualified and registered healthcare professional.
- Because of the sheet's four way stretch properties, the sheet 'moulds' over the sleep system parts that are placed below it. In this way the contours of the supports are not lost ensuring good support and optimising contact with the person's body.
- The intended purpose of the sleep system is therapeutic positioning in the lying posture, it is a gentle therapy used by people with movement difficulties. When used correctly it may help protect and restore an individual's body shape.

Contact phone number for assistance _____

! CAUTION

The mattress, cotton sheet and mesh sheets should be free of objects and creases.

1. Any objects trapped between, underneath, or on top of the sheets will be a potential risk for pressure ulcer development.
2. Any creases in the sheets will be a potential risk for pressure ulcer development.
3. The user to smooth the sheets to check for unwanted objects and creases.

! CAUTION

Only use Simple Stuff Works components and accessories

1. Any unauthorized use of the system may put the patient and the care giver at risk.
2. Any creases in the sheets will be a potential risk for pressure ulcer development.
3. Failure to follow these instructions will invalidate the warranty.

15. Index

No	Section	Page Number
1	Accessories	16
2	Checkout procedures	8
3	Cleaning instructions	11
4	Date of writing the manual	15
5	Description of the device	6
6	Environmental factors that affect the use	6
7	Index	15
8	Maintenance instructions	12
9	Operating instructions of the device	9
10	Purpose of the device	5
11	Set up instructions of the device	7
12	Storage of the device	12
13	Summary page	14
14	Table of Contents	2
15	Troubleshooting	12
16	User assistance information	1
17	Warnings and Cautions	throughout

16. Date of writing the manual

October 2016

17. Accessories

All accessories that can be used have their individualized manuals and instructions, they are listed below. Individual manual to be fully read and understood. Not all of the accessories below will be considered suitable or appropriate, this will be determined by the registered health professional.

1. Mattress topper	8. Plastazote Wedges
2. Fibre Wedges	9. Foot Supports
3. Fibre Wedges with Mesh	10. Horseshoe Pillow
4. Stabilizing Flat Mesh Base System	11. Neck Pillow
5. Stabilizing Fitted Mesh Base System	12. Sausage Pillow
6. Lateral Supports and Padded Covers	13. Temperature Regulating Pillow
7. Lateral Supports and Padded Covers with Mesh	14. Supine Stabilizer
	15. Side Lying Leg Support